

WEM Quarterly Market Review

Q1 2026

Introduction

What is this report and where did all the data come from?

- This report presents an independent review of Wholesale Electricity Market (WEM) outcomes in Q1 2026 from a neutral perspective (*).
- The material in this report is intended to complement the data and insights published by AEMO and other WEM stakeholders.
- Please note that there is no proprietary data used in this report and all the information is derived from the following publicly available data sources:

Data Source	Link
AEMO WA market data	http://data.wa.aemo.com.au/
WEM market fees	https://aemo.com.au/-/media/files/about_aemo/energy_market_budget_and_fees/2023/wa-budget-and-fees-2023-24.pdf?la=en
LGC spot prices (Demand Manager)	https://www.demandmanager.com.au/certificate-prices/
Perth daily temperatures (Bureau of Meteorology)	http://www.bom.gov.au/climate/dwo/IDCJDW6111.latest.shtml

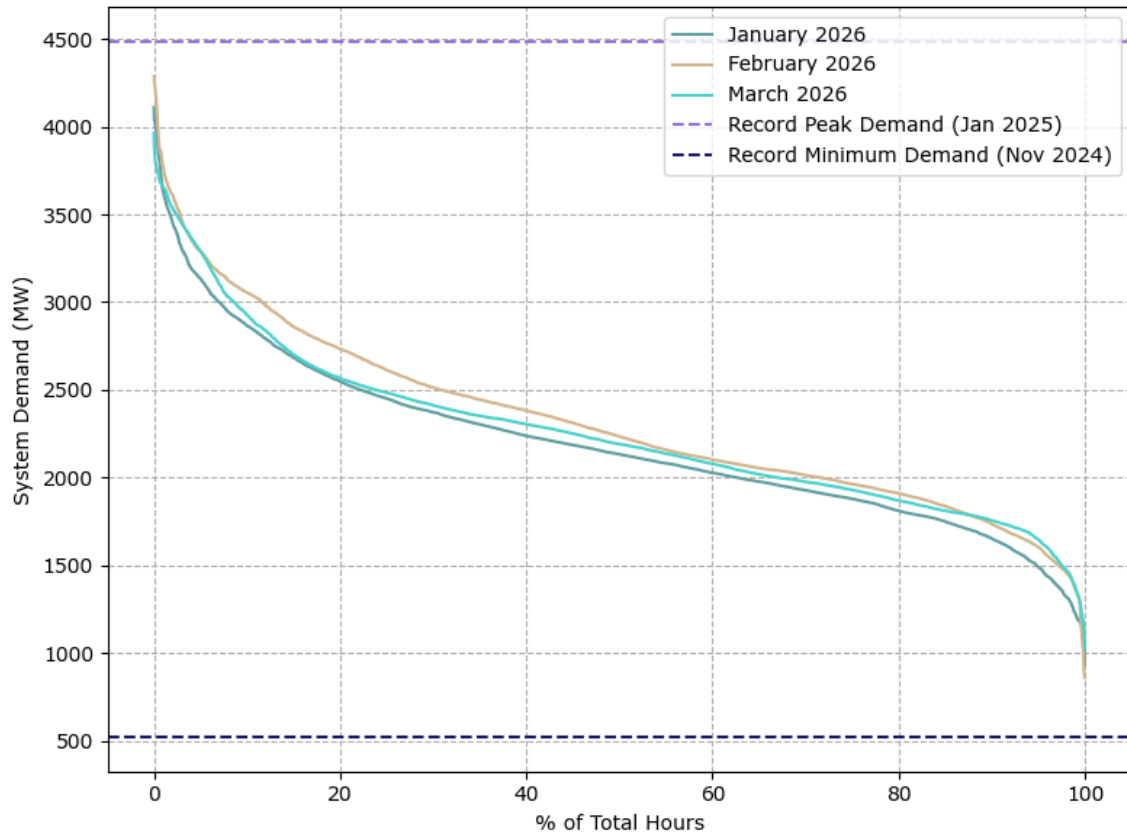
.01 System

Aggregate system level outcomes

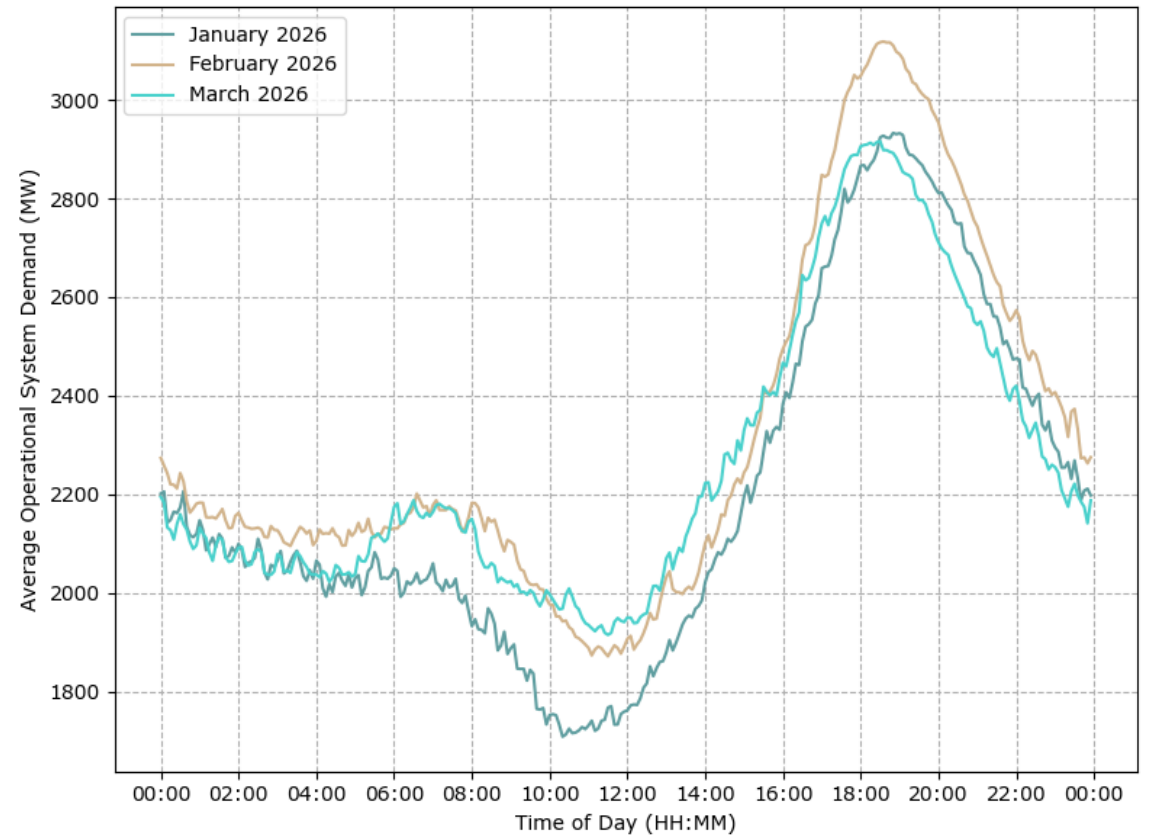
System Operational Demand

System operational demand duration curves and time-of-day averages

Demand Duration Curves



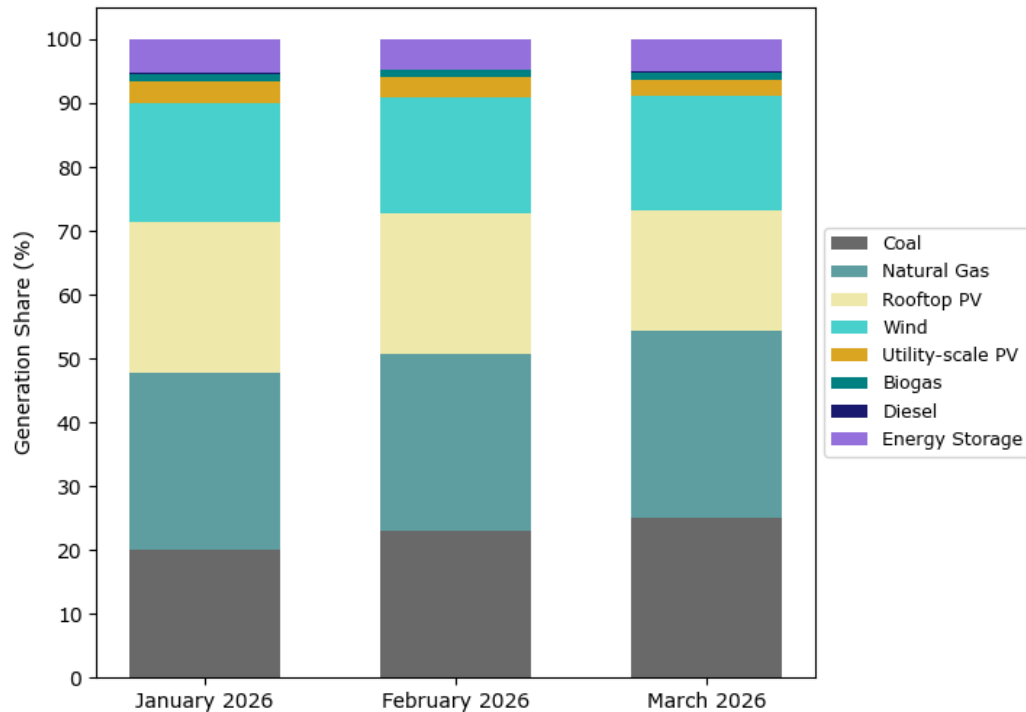
Average Time-of-Day Demand



Generation Mix

Categorised by fuel / technology type

Q1 2026 Generation Mix



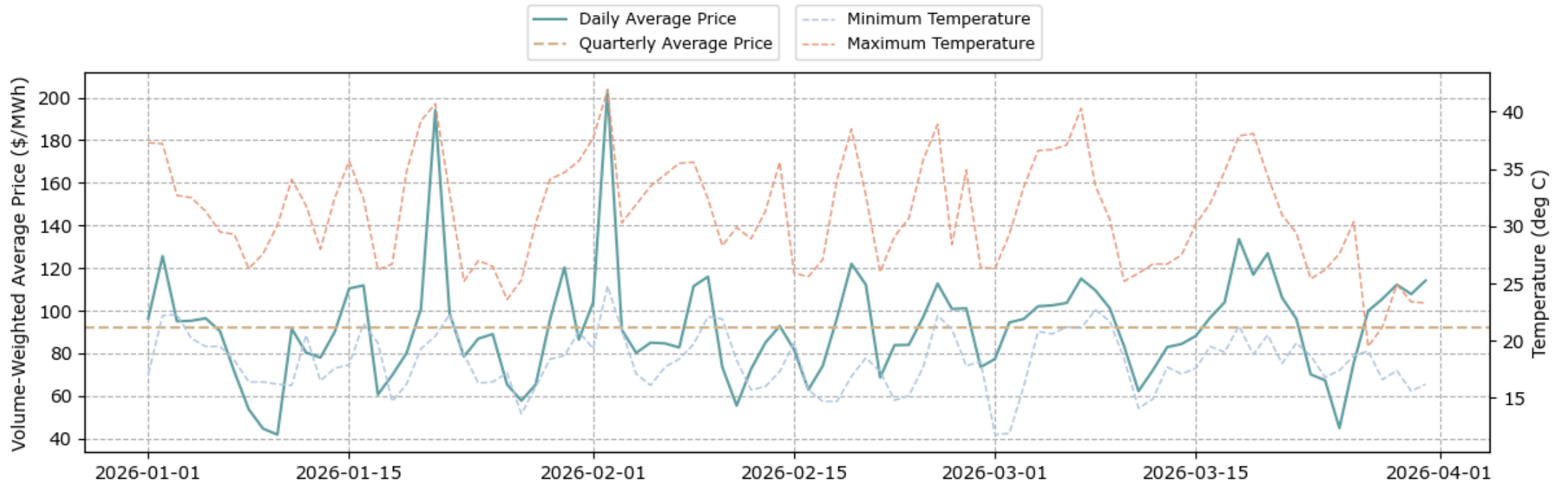
Generation Mix Breakdown

Category	Jan 2026	Feb 2026	Mar 2026
Coal	426 GWh (19.9%)	456 GWh (22.9%)	513 GWh (24.9%)
Natural Gas	593 GWh (27.7%)	552 GWh (27.8%)	606 GWh (29.4%)
Rooftop PV	508 GWh (23.8%)	436 GWh (21.9%)	390 GWh (18.9%)
Wind	398 GWh (18.6%)	362 GWh (18.2%)	371 GWh (18%)
Utility PV	72 GWh (3.3%)	62 GWh (3.1%)	48 GWh (2.3%)
Biogas	27 GWh (1.2%)	25 GWh (1.3%)	28 GWh (1.3%)
Diesel	1 GWh (0%)	1 GWh (0%)	1 GWh (0%)
Storage (*)	114 GWh (5.3%)	93 GWh (4.7%)	105 GWh (5.1%)
TOTAL	2,139 GWh	1,987 GWh	2,062 GWh

(*) Energy storage is only counted when discharging.

Energy Prices

Daily volume-weighted energy prices and daily min/max Perth temperatures (*)

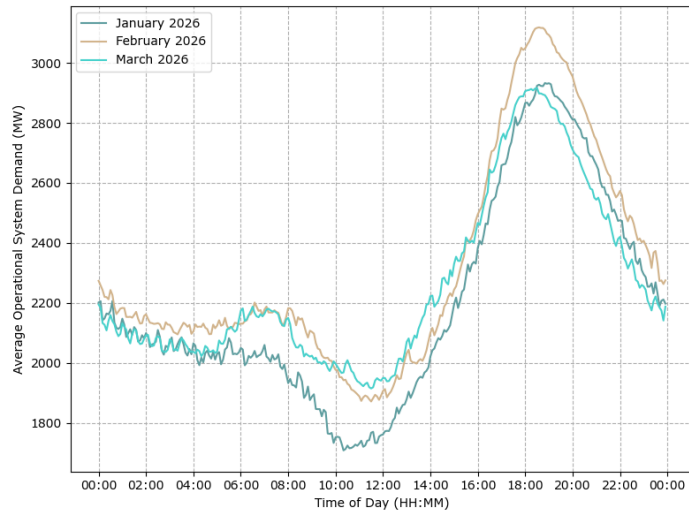
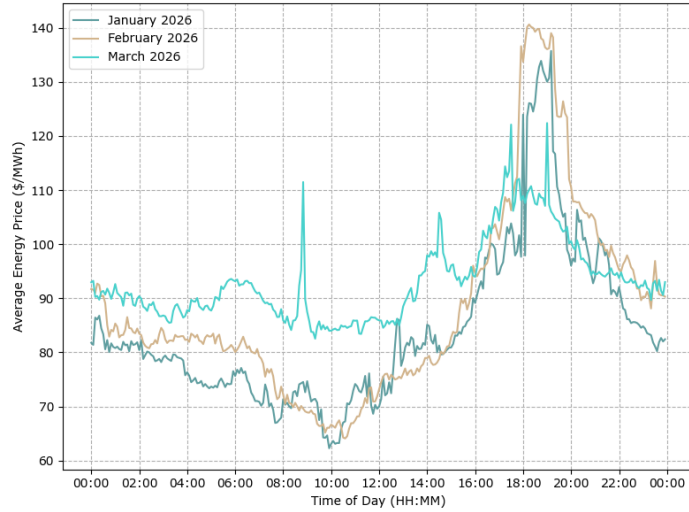


(*) Daily temperatures are based on BOM observations at the [Perth Metro site](#).

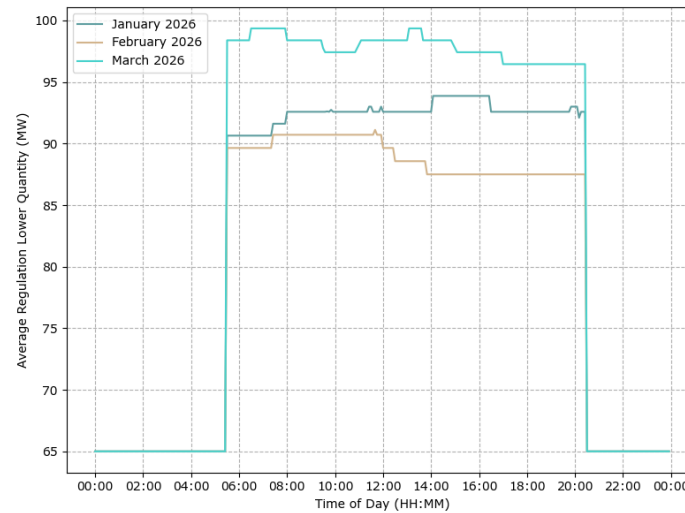
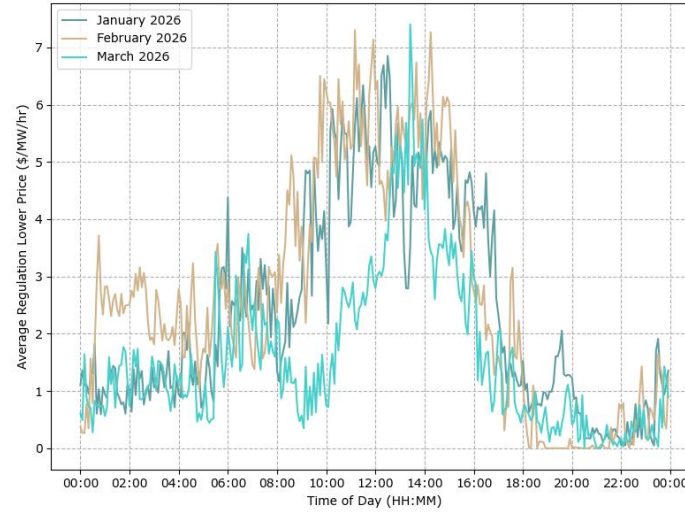
Average time-of-day clearing prices and quantities (1)

Energy, Regulation Lower and Regulation Raise ESS

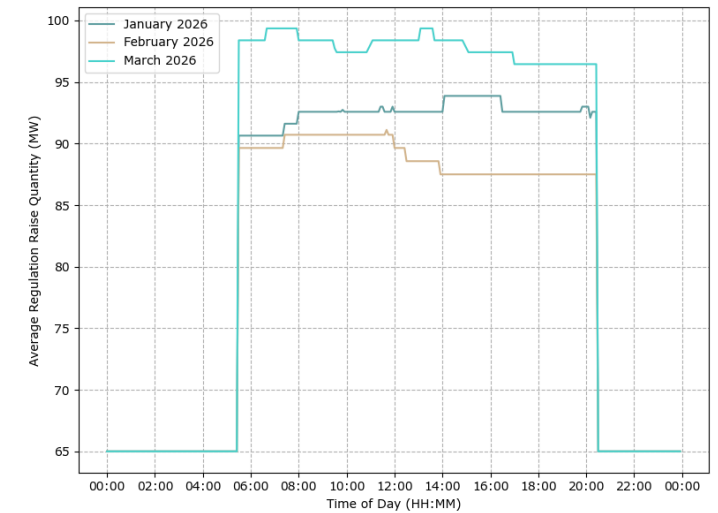
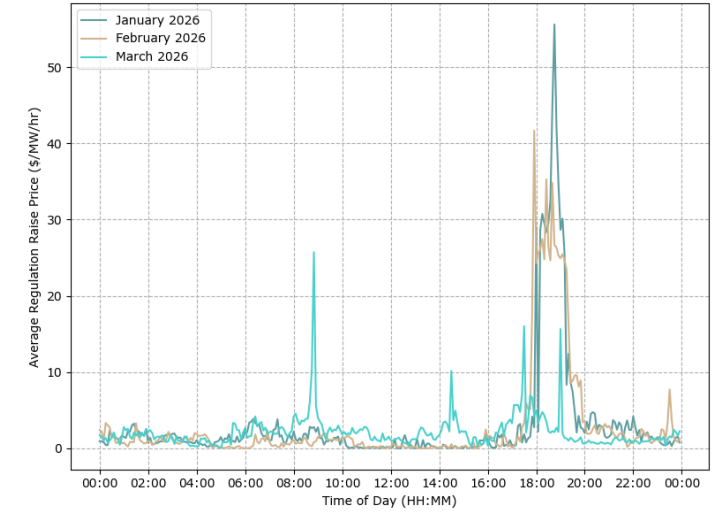
Energy



Regulation Lower (*)



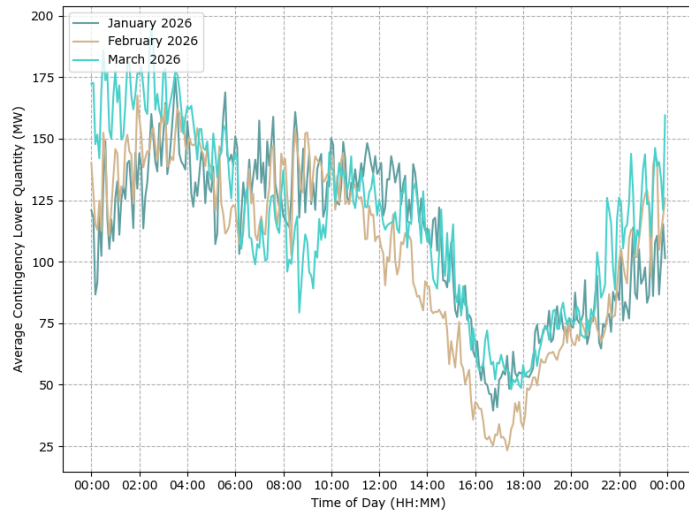
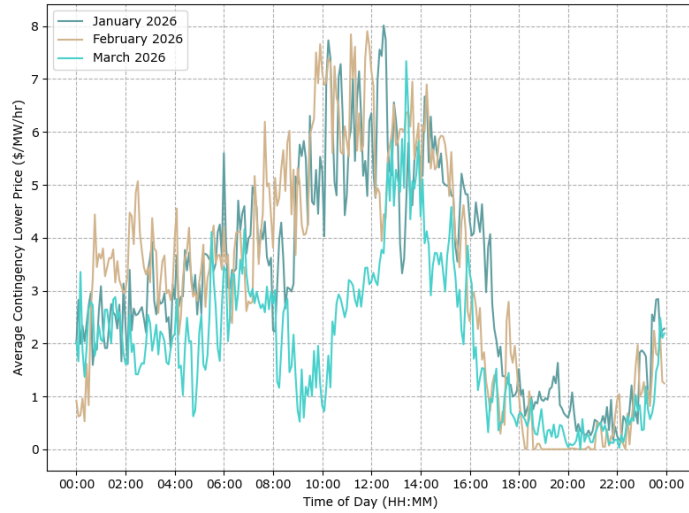
Regulation Raise (*)



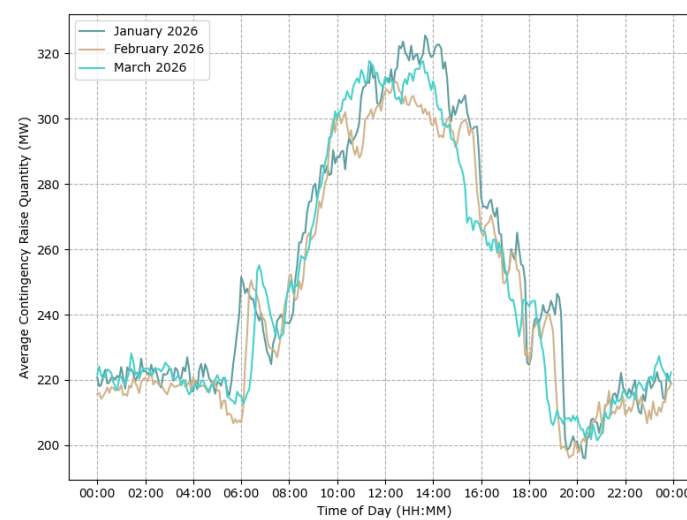
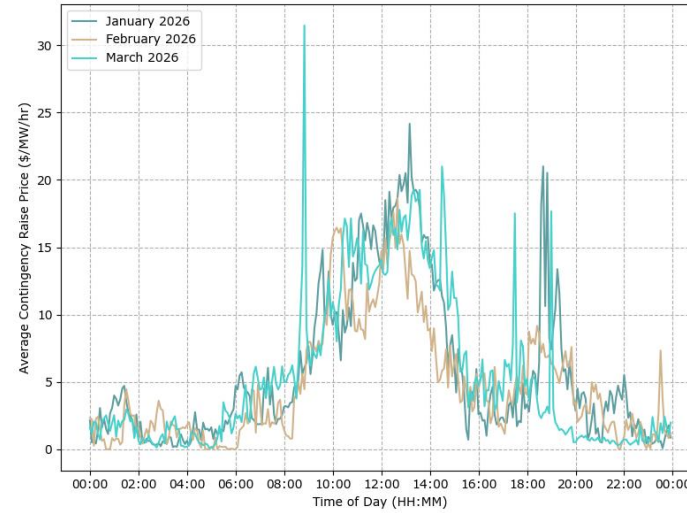
Average time-of-day clearing prices and quantities (2)

Contingency Lower, Contingency Raise and RoCoF Control ESS

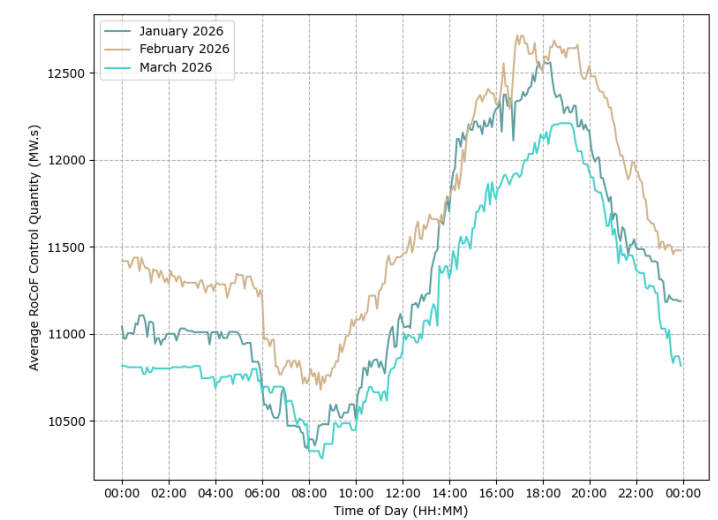
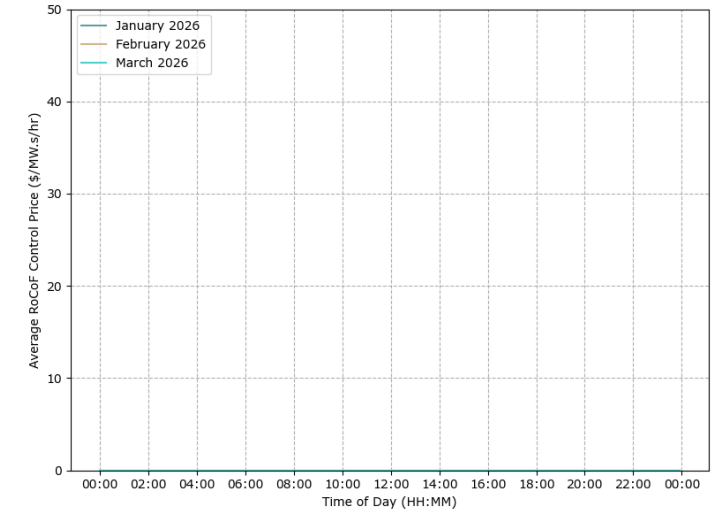
Contingency Lower (*)



Contingency Raise (*)



RoCoF Control (*)



.02

Facilities

Selected facility level outcomes

Facility-Level Metrics

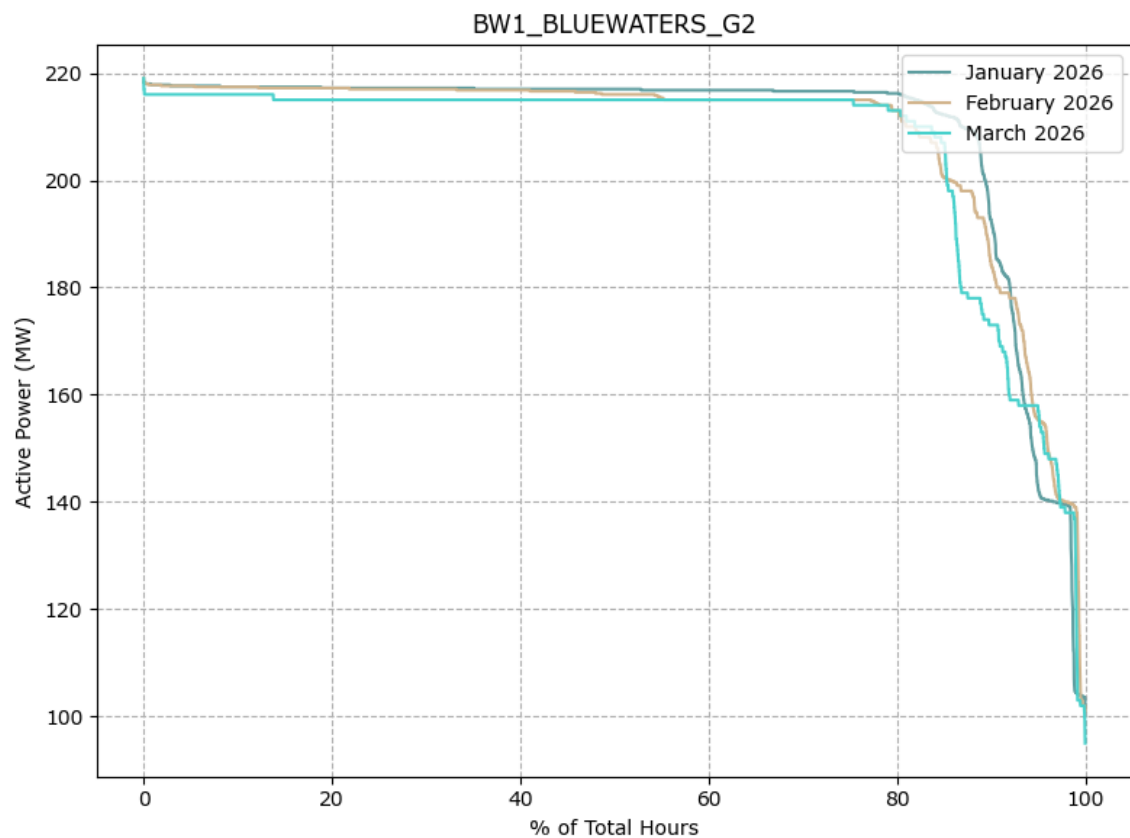
Definitions for the facility-level metrics reported in this section

Facility Metric	Description
Monthly Generation Duration Curve	Curve showing the proportion of time in a month that a facility is operating above a specific output.
Average Time of Day Output	Curve showing the mean output from a facility over a month at a 5-min resolution (with no adjustments for a facility being offline).
Facility Merchant Spot Revenue	The implied monthly revenue that a facility would have received from all energy and ESS markets if it were a merchant facility. Where a facility receives Large Generation Certificate (LGC), this revenue is estimated based on publicly available LGC spot prices published on Demand Manager .
Facility Capacity Factor	Daily average capacity factors based on the daily energy generated and the registered facility size . Note that for energy storage facilities, the net energy throughput is used.
Average Energy Capture Price	Daily average volume weighted energy price that the facility receives based on the following calculation: $\text{Average Energy Capture Price} = \frac{\sum \text{Energy Revenue}}{\sum \text{Energy Generated or Consumed} }$

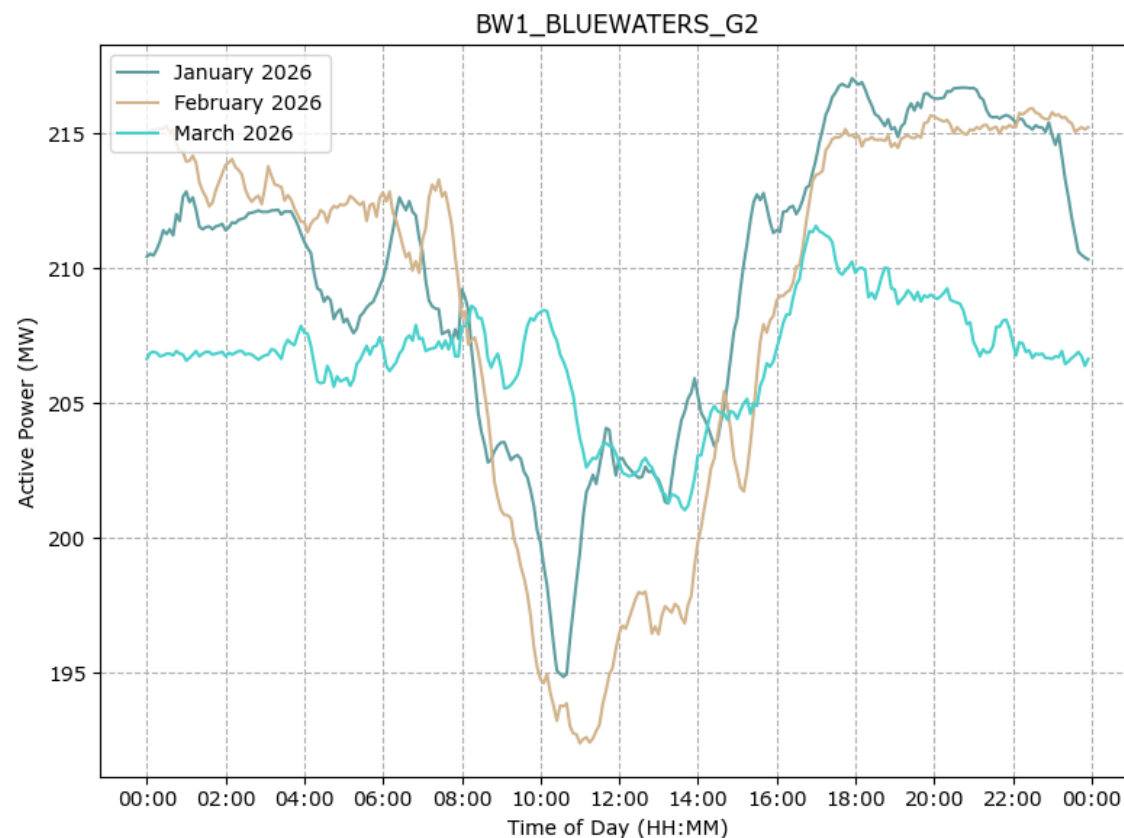
Bluewaters Power Station BW1-G2

Coal-fired Scheduled Facility, 217 MW, Summit Southern Cross Power

Generation Duration Curves



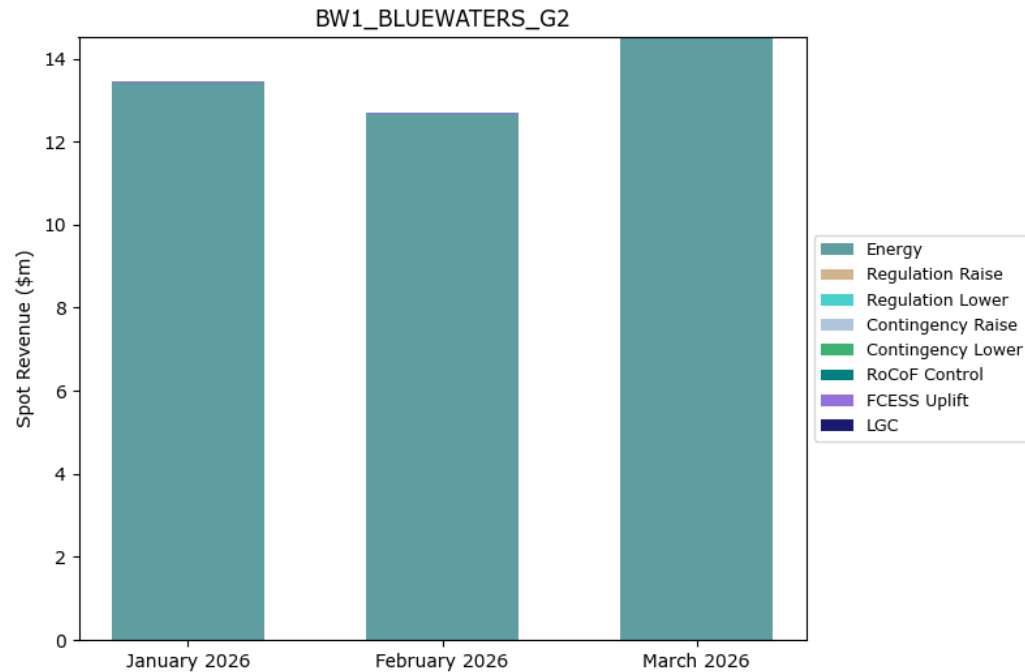
Average Time-of-Day Output



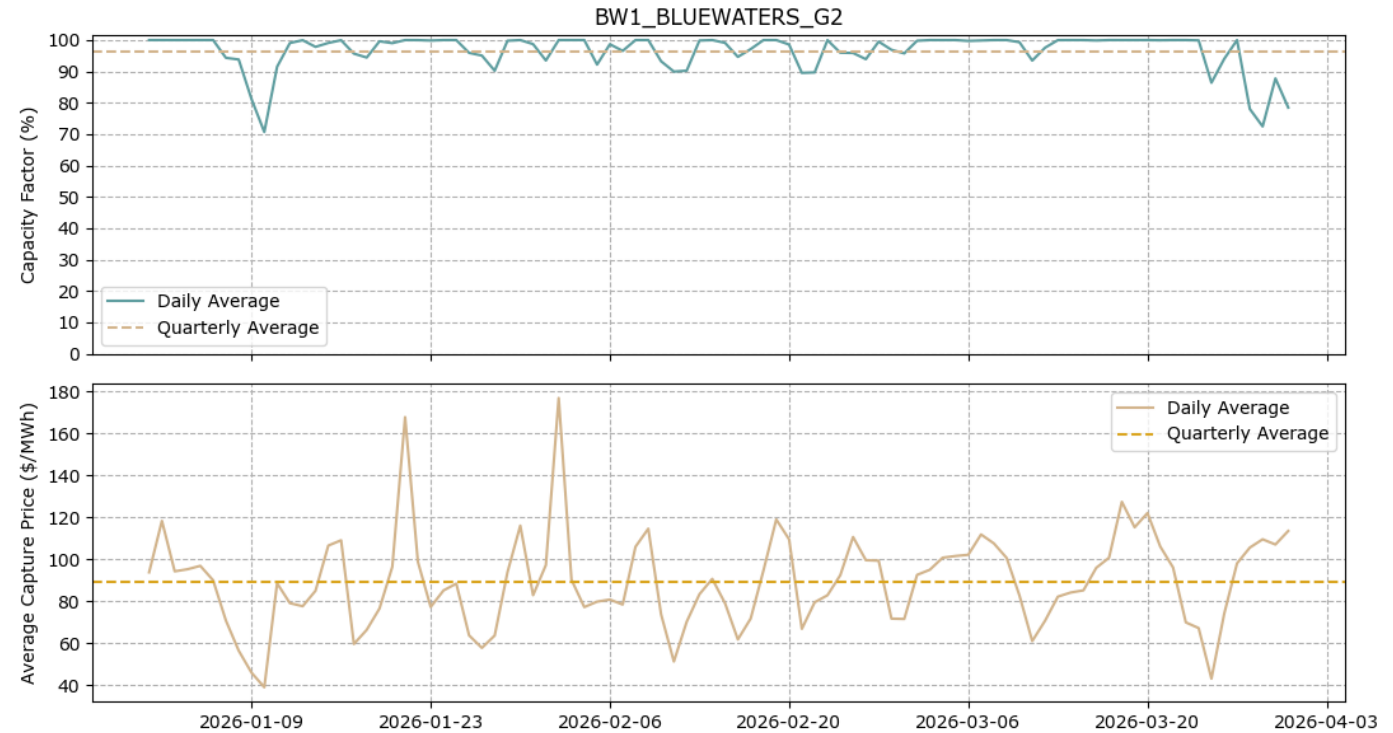
Bluewaters Power Station BW1-G2

Coal-fired Scheduled Facility, 217 MW, Summit Southern Cross Power

Facility Merchant Spot Revenue



Daily Capacity Factor and Average Energy Capture Price

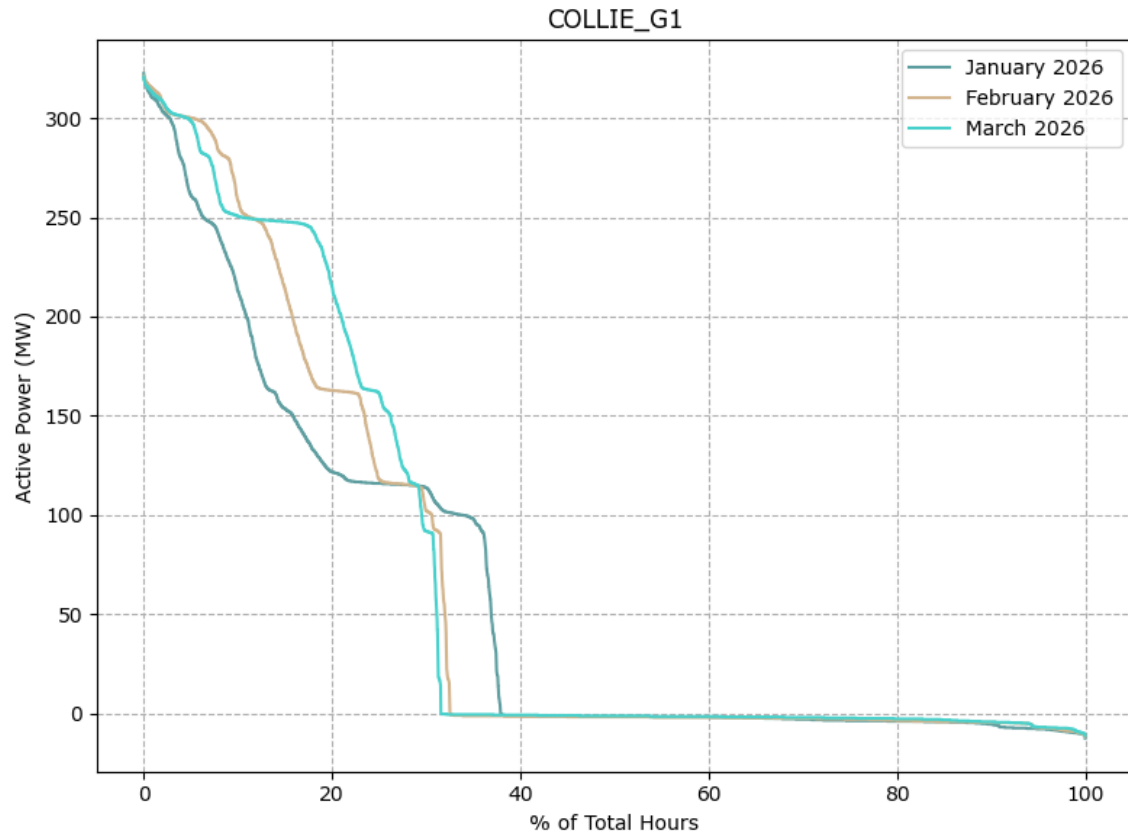


	Jan 2026	Feb 2026	Mar 2026
Energy Generated (GWh)	156.01	140.88	155.32
Total Spot Revenue (\$m)	13.44	12.69	14.52
\$/MWh	\$86.14	\$90.06	\$93.49

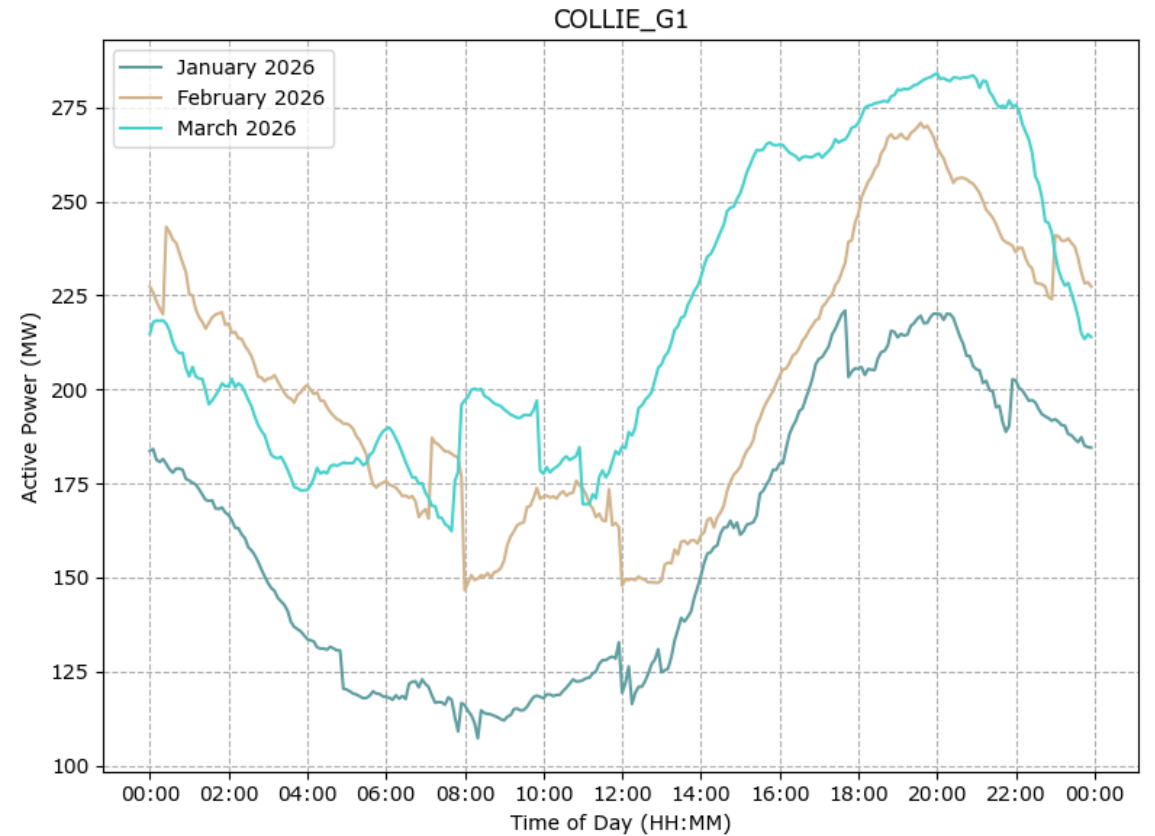
Collie Power Station G1

Coal-fired Scheduled Facility, 318.3 MW, Synergy

Generation Duration Curves



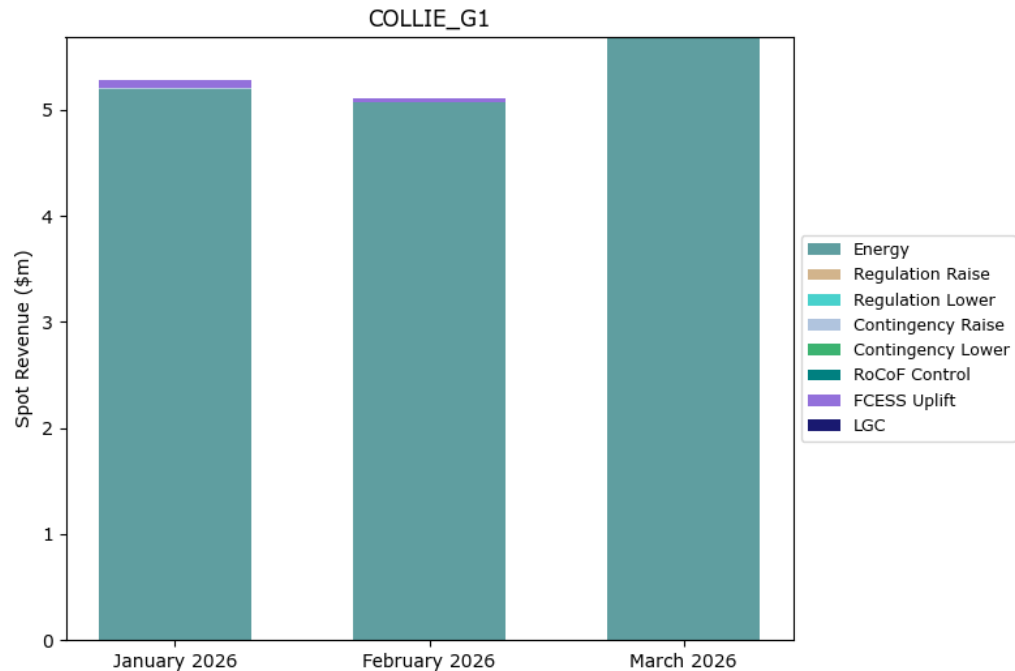
Average Time-of-Day Output



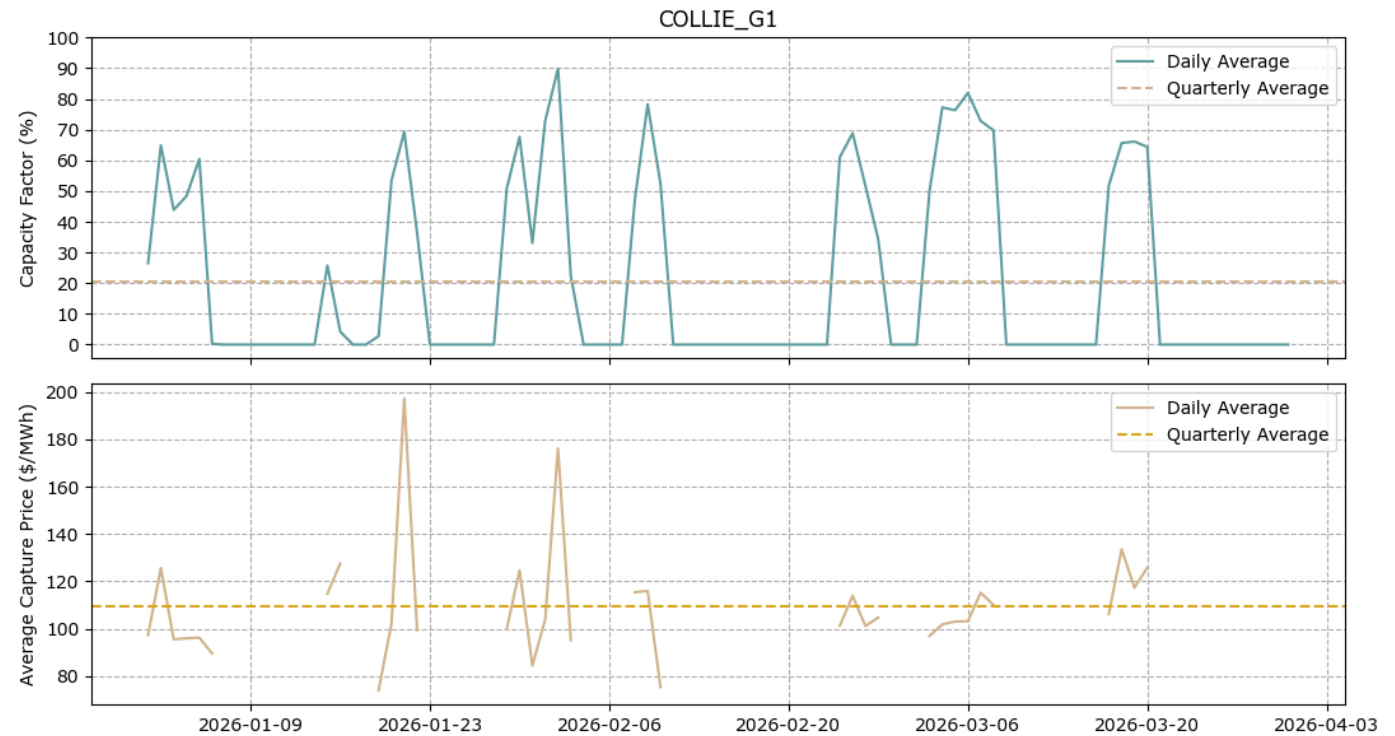
Collie Power Station G1

Coal-fired Scheduled Facility, 318.3 MW, Synergy

Facility Merchant Spot Revenue



Daily Capacity Factor and Average Energy Capture Price

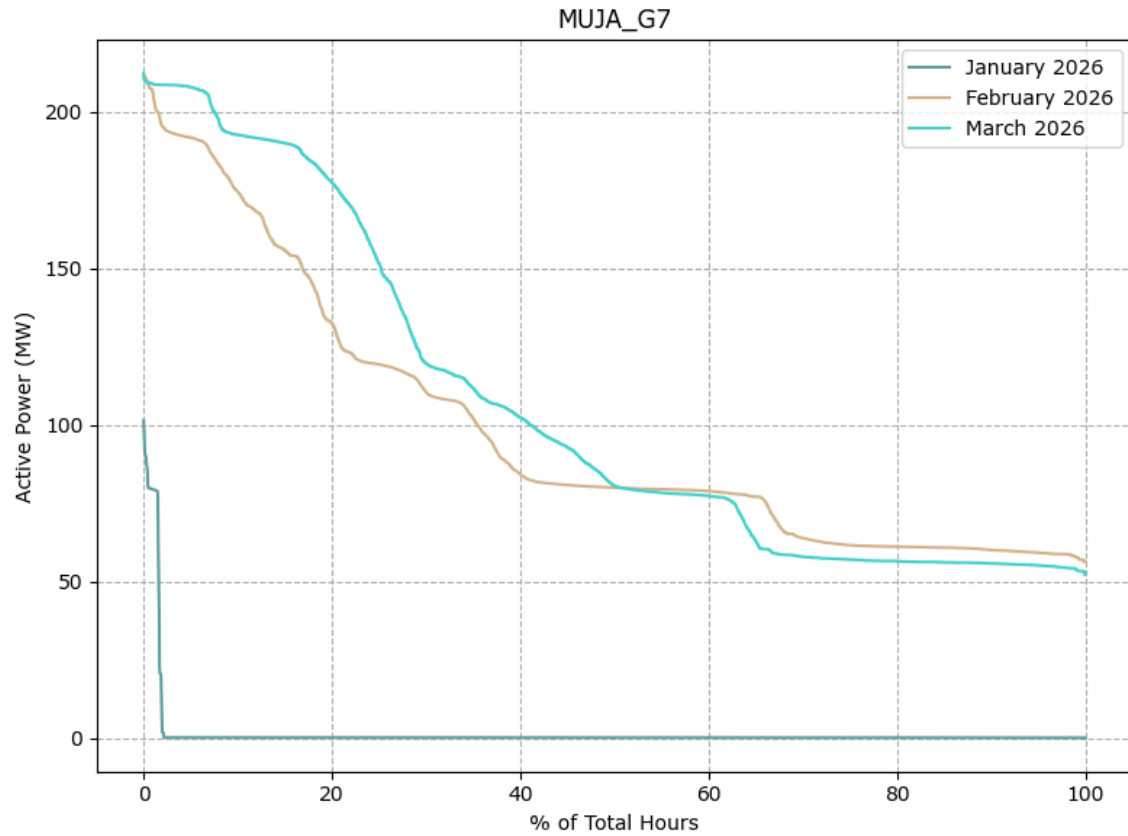


	Jan 2026	Feb 2026	Mar 2026
Energy Generated (GWh)	45.00	44.67	52.56
Total Spot Revenue (\$m)	5.28	5.11	5.69
\$/MWh	\$117.26	\$114.42	\$108.19

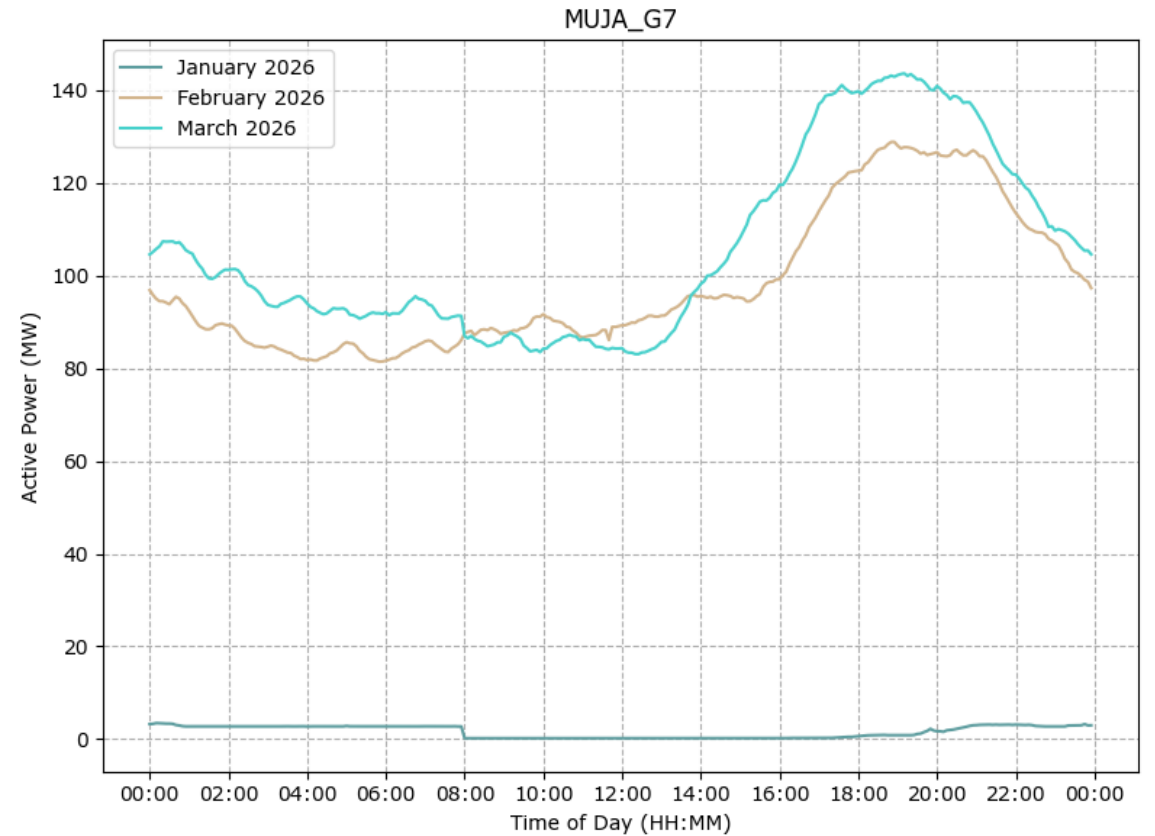
Muja Power Station G7

Coal-fired Scheduled Facility, 212.6 MW, Synergy

Generation Duration Curves



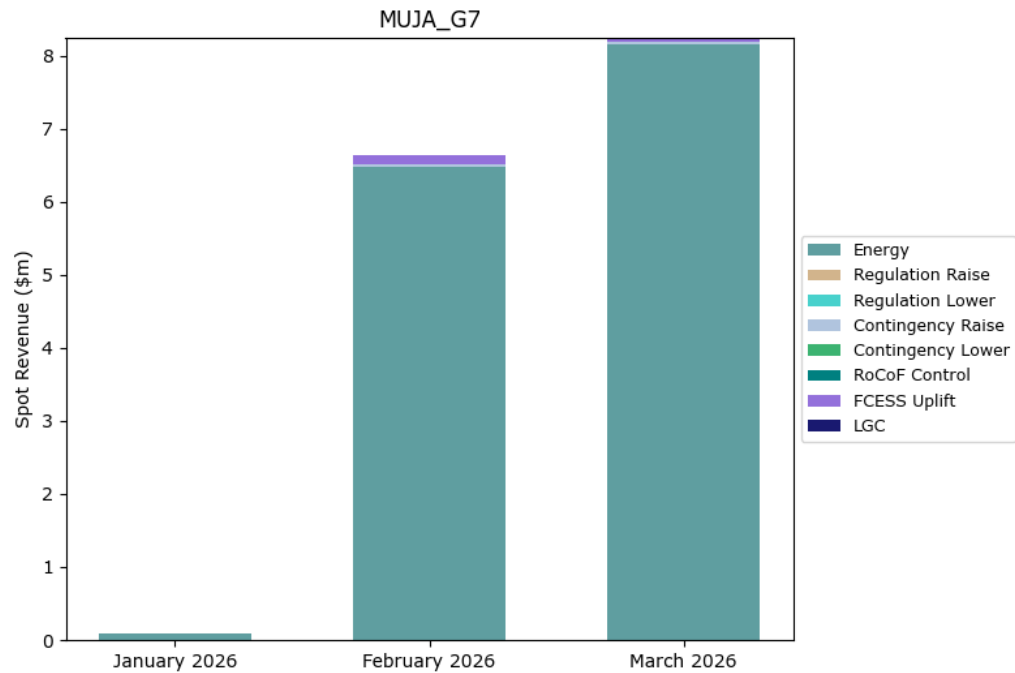
Average Time-of-Day Output



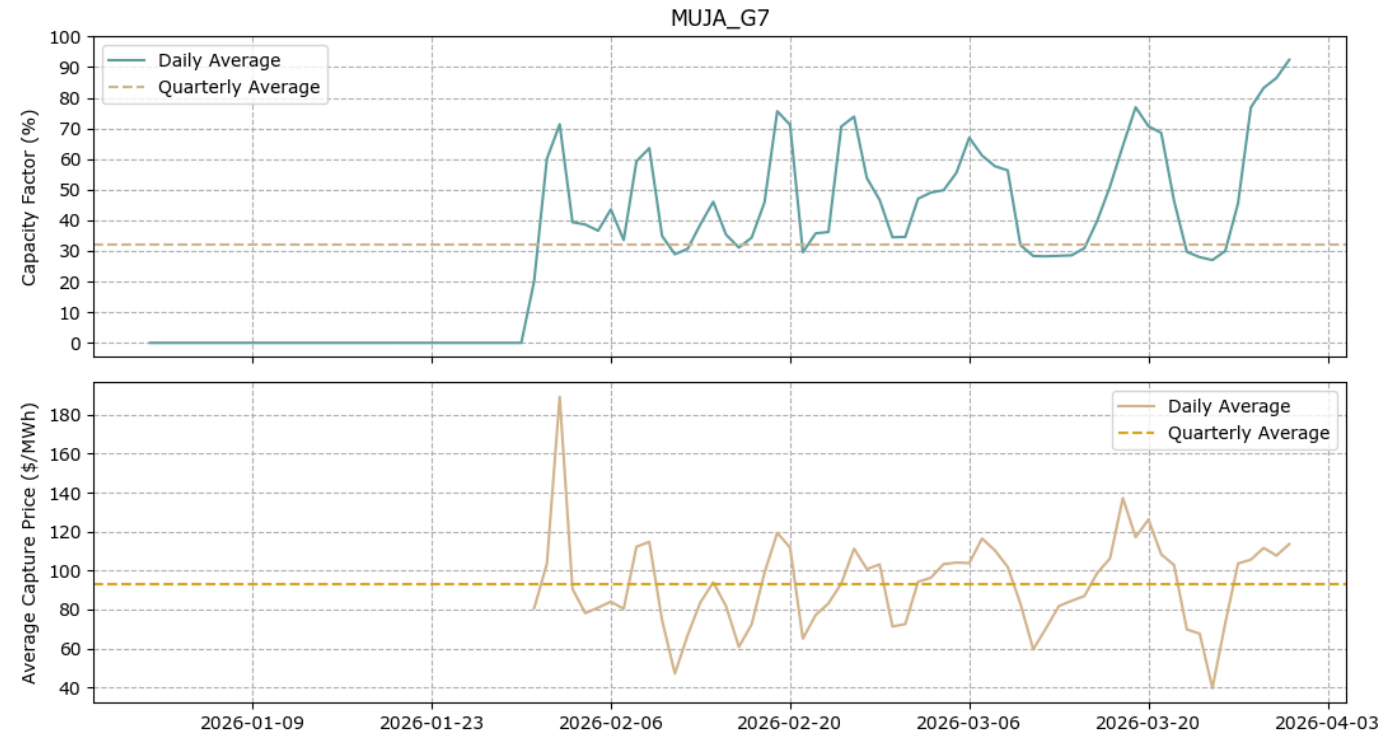
Muja Power Station G7

Coal-fired Scheduled Facility, 212.6 MW, Synergy

Facility Merchant Spot Revenue



Daily Capacity Factor and Average Energy Capture Price

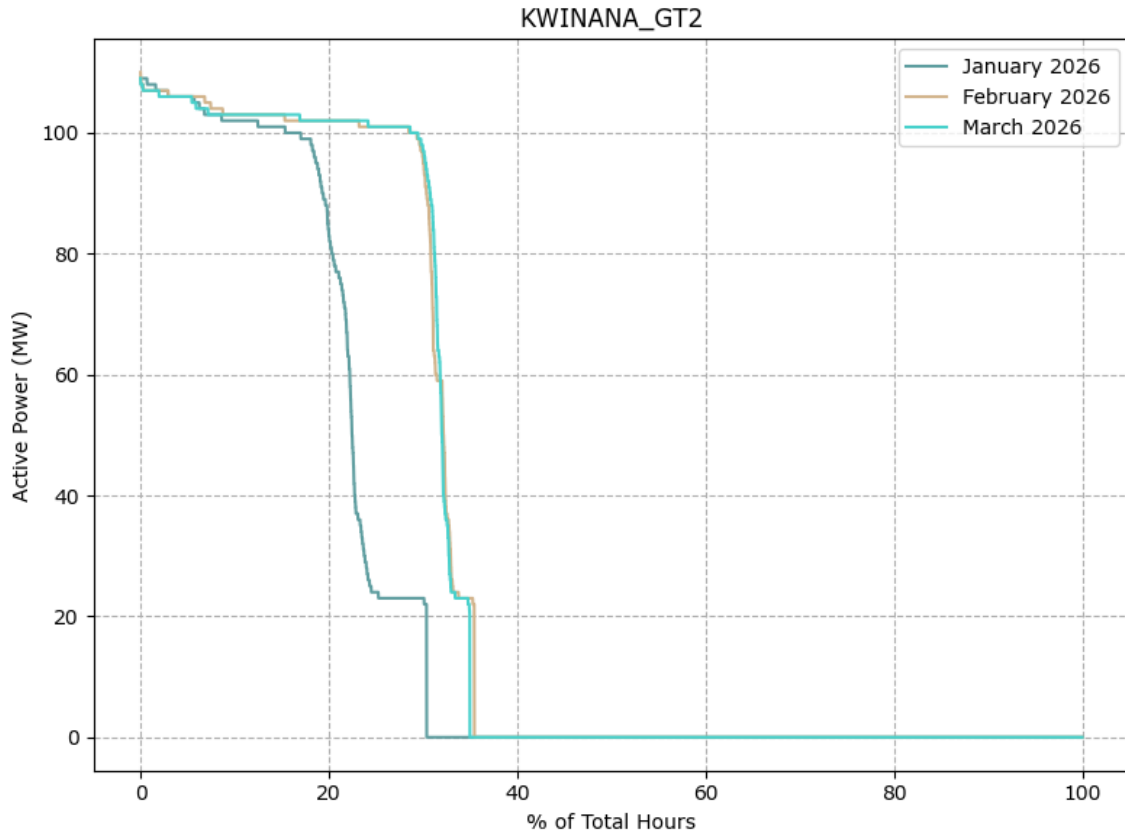


	Jan 2026	Feb 2026	Mar 2026
Energy Generated (GWh)	1.02	66.30	80.17
Total Spot Revenue (\$m)	0.10	6.65	8.25
\$/MWh	\$95.13	\$100.29	\$102.89

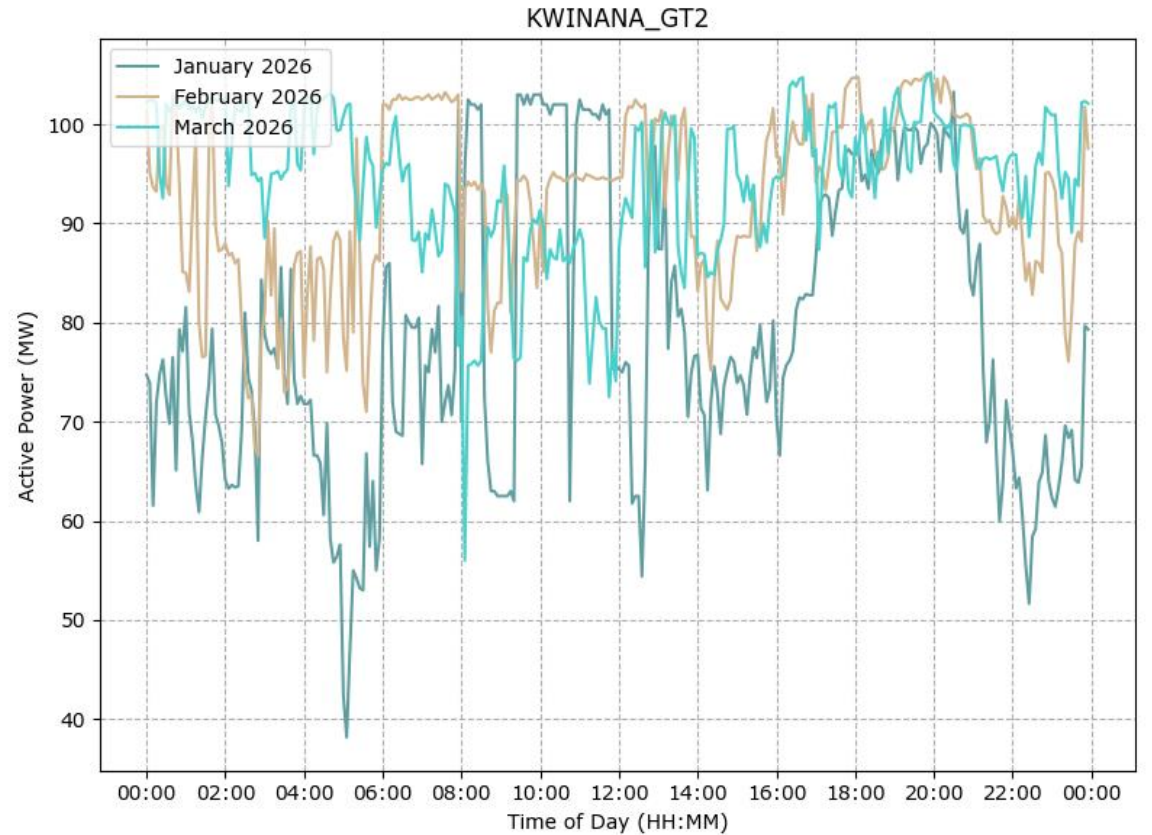
Kwinana Power Station GT2

Gas-fired Scheduled Facility, 103.94 MW, Synergy

Generation Duration Curves



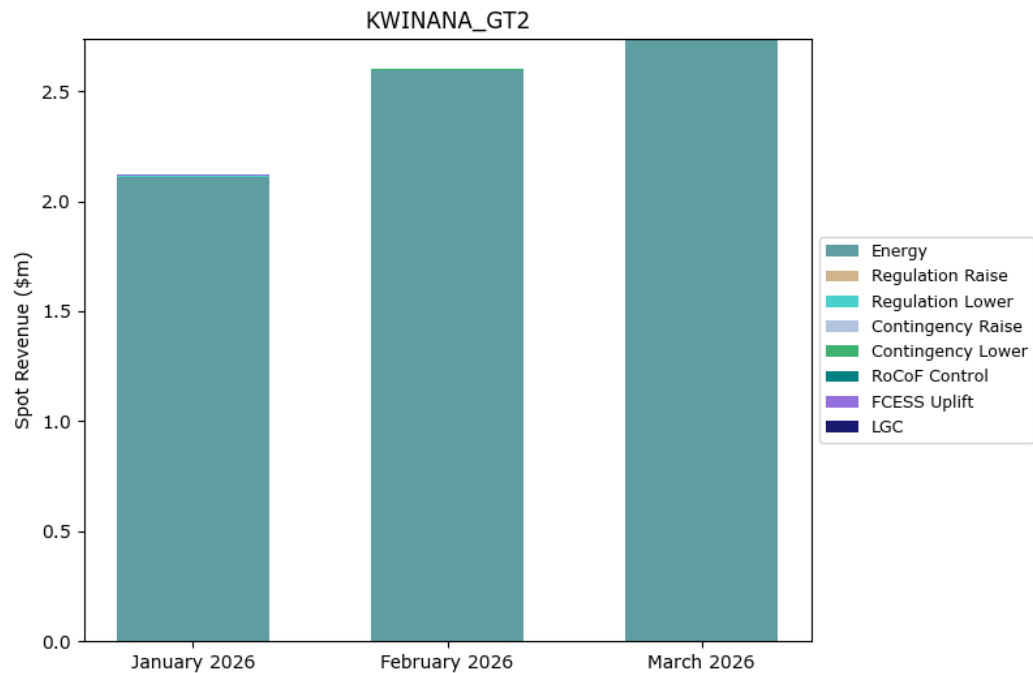
Average Time-of-Day Output



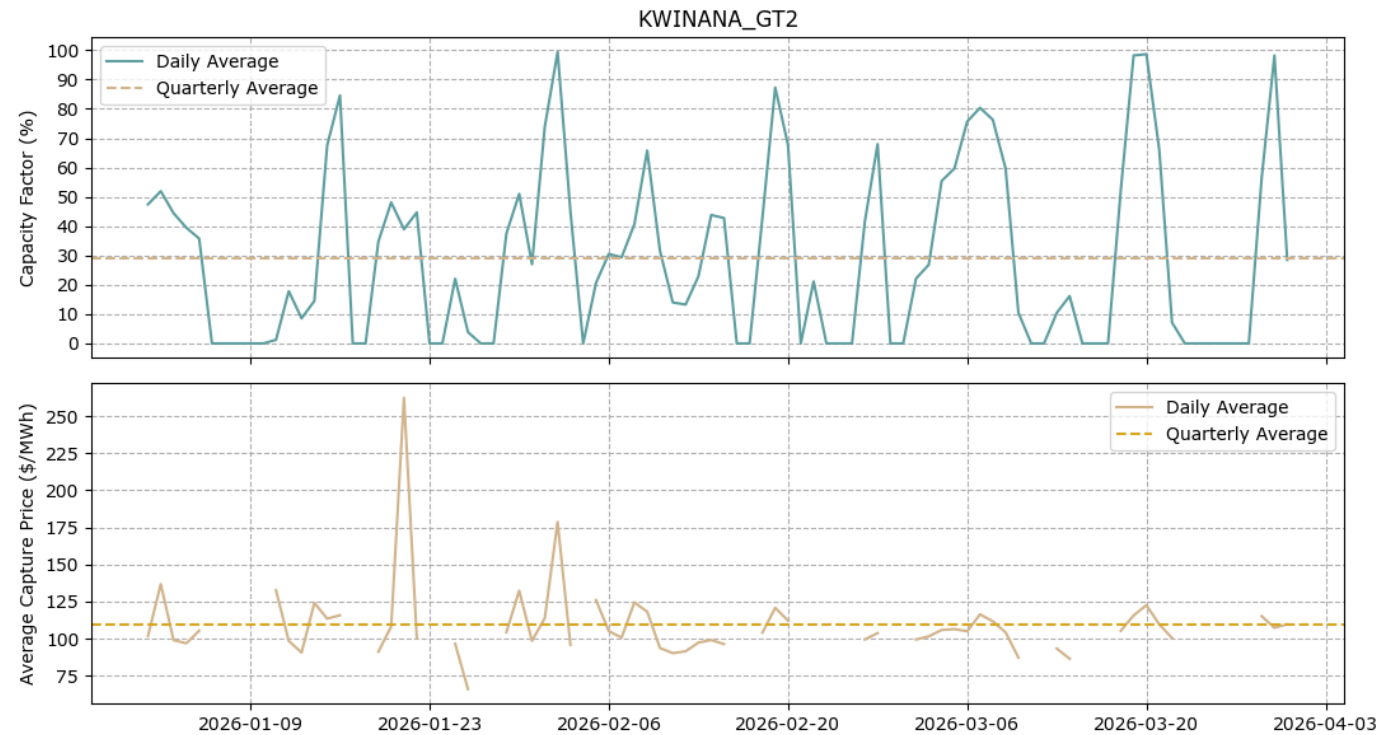
Kwinana Power Station GT2

Gas-fired Scheduled Facility, 103.94 MW, Synergy

Facility Merchant Spot Revenue



Daily Capacity Factor and Average Energy Capture Price

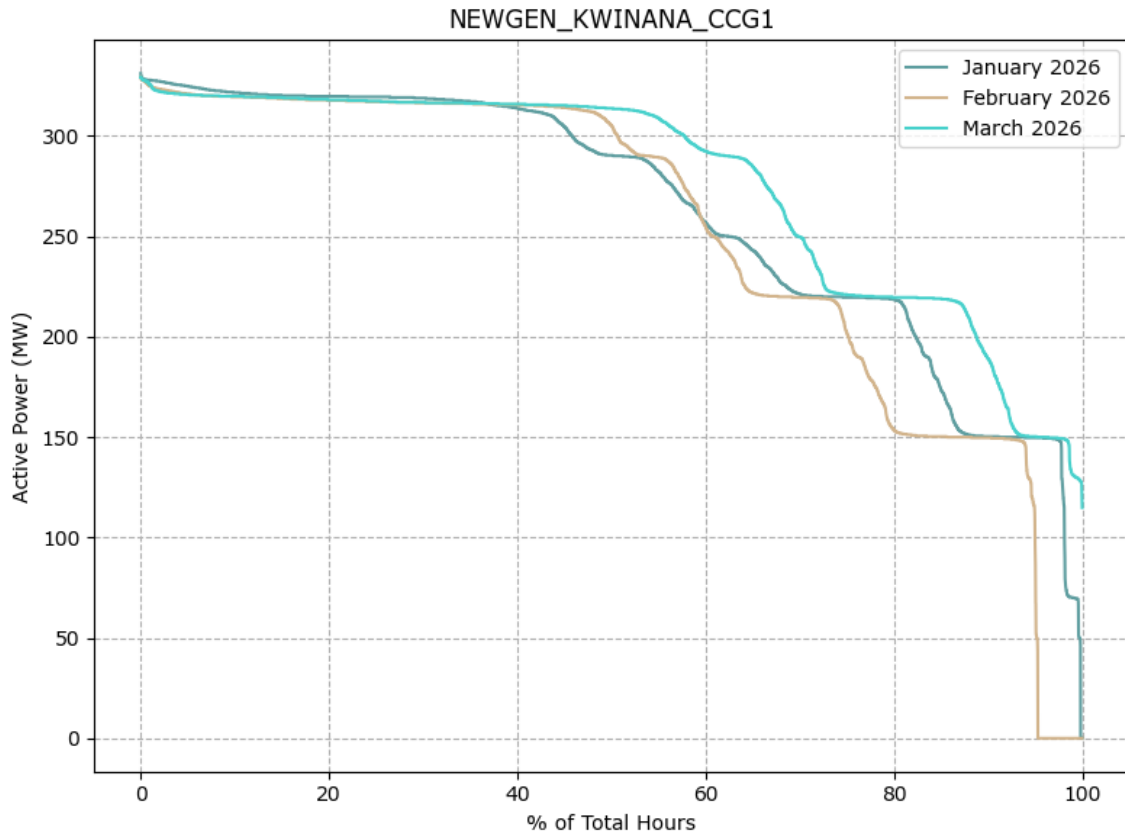


	Jan 2026	Feb 2026	Mar 2026
Energy Generated (GWh)	17.99	22.50	24.91
Total Spot Revenue (\$m)	2.12	2.60	2.74
\$/MWh	\$117.85	\$115.56	\$109.95

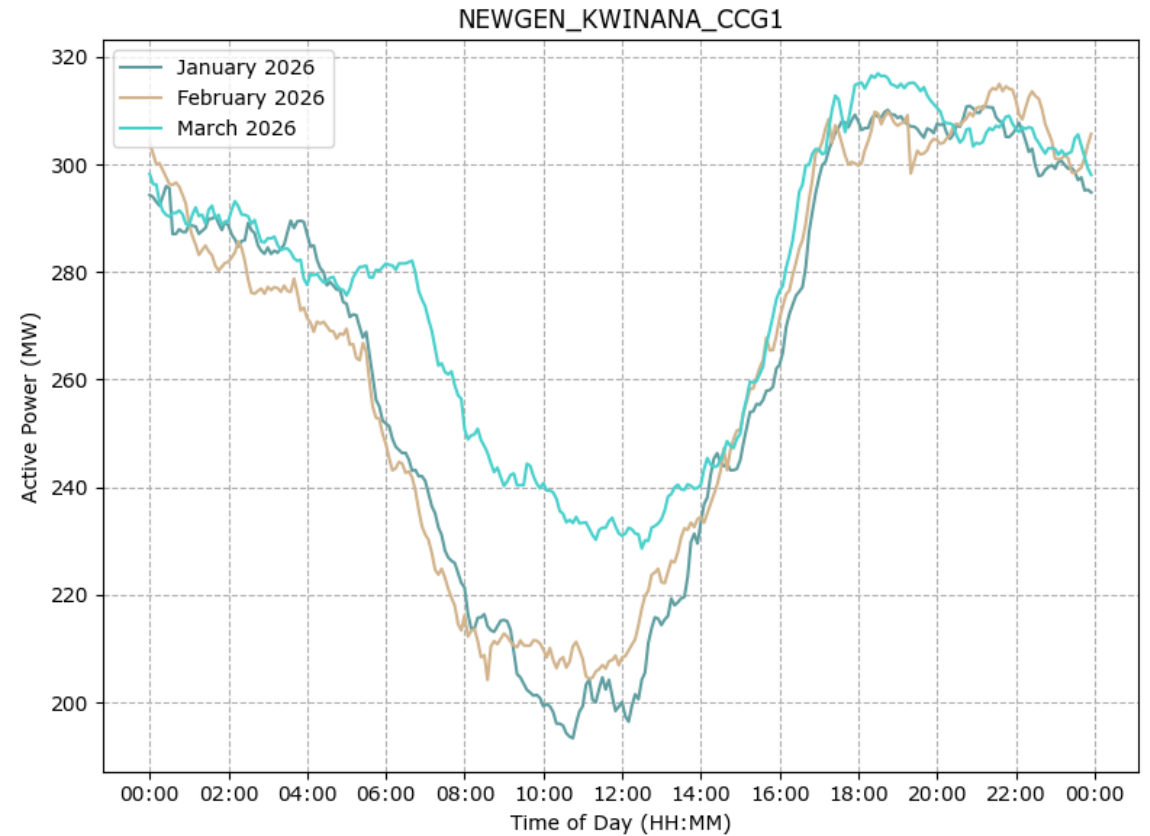
Newgen Kwinana Power Station

Gas-fired Scheduled Facility, 334.8 MW, Summit Southern Cross Power

Generation Duration Curves



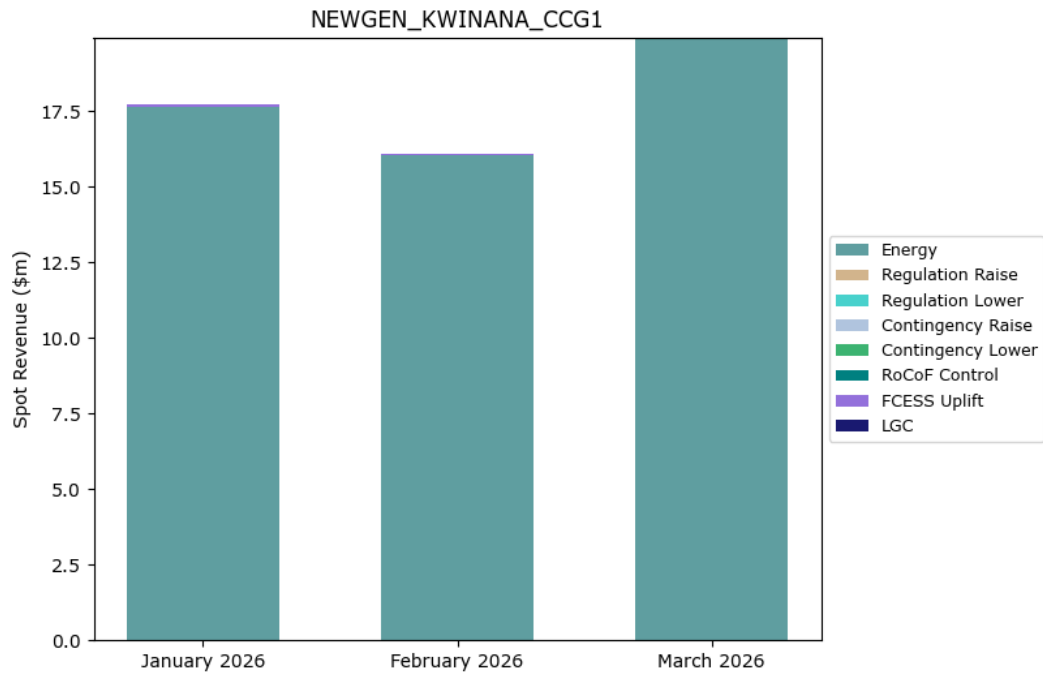
Average Time-of-Day Output



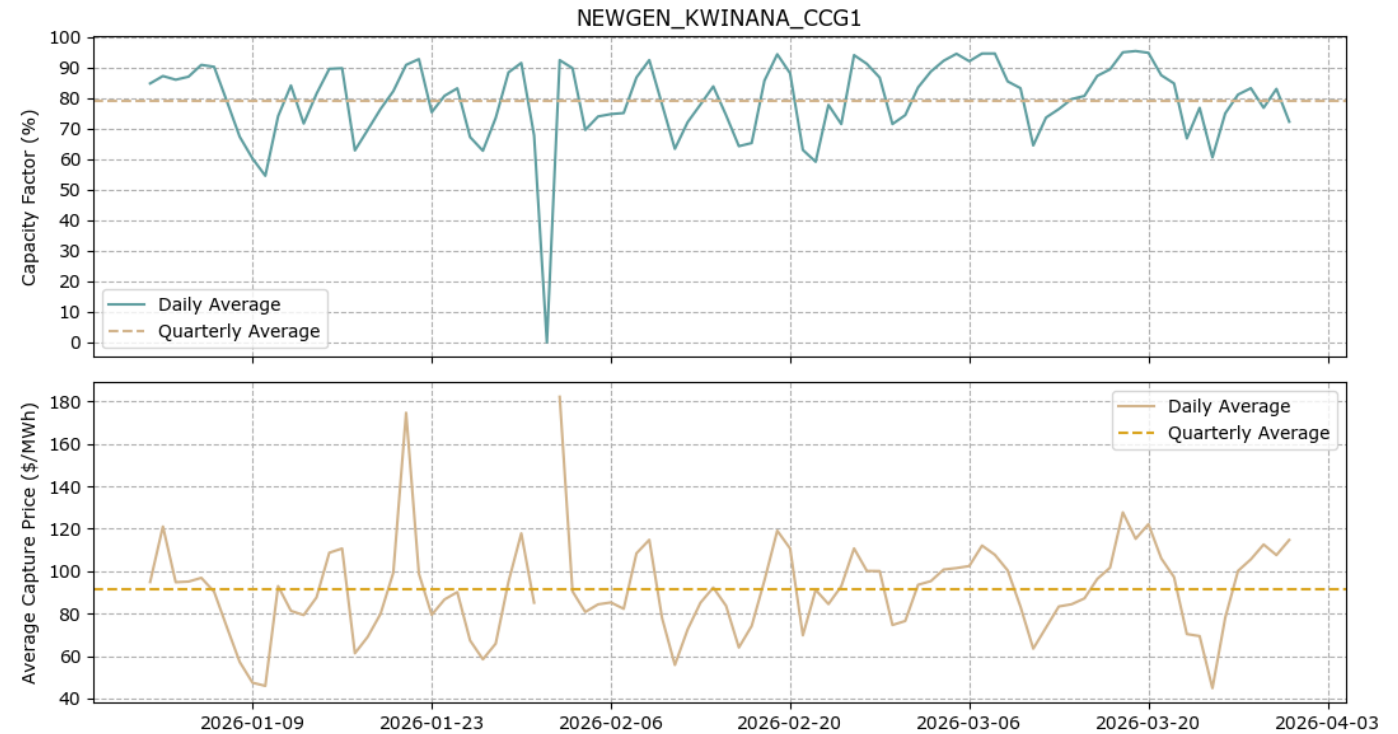
Newgen Kwinana Power Station

Gas-fired Scheduled Facility, 334.8 MW, Summit Southern Cross Power

Facility Merchant Spot Revenue



Daily Capacity Factor and Average Energy Capture Price

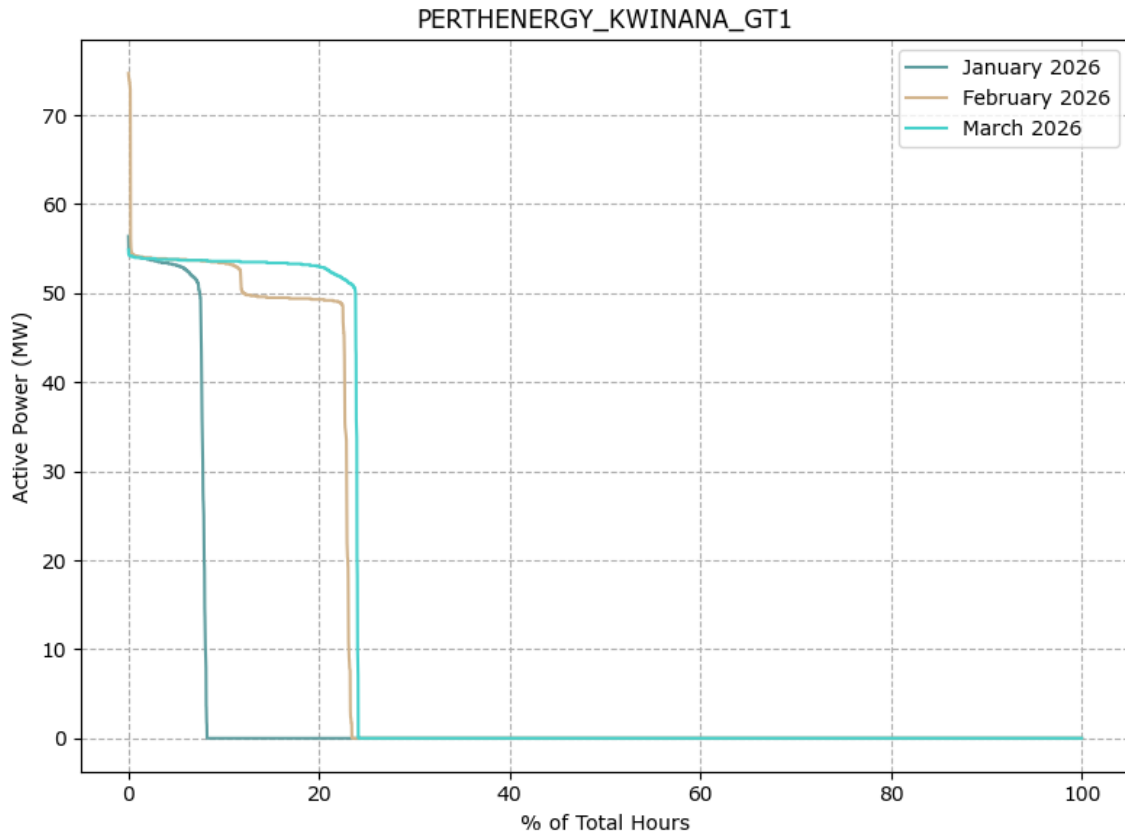


	Jan 2026	Feb 2026	Mar 2026
Energy Generated (GWh)	196.20	170.02	206.24
Total Spot Revenue (\$m)	17.72	16.06	19.92
\$/MWh	\$90.29	\$94.48	\$96.57

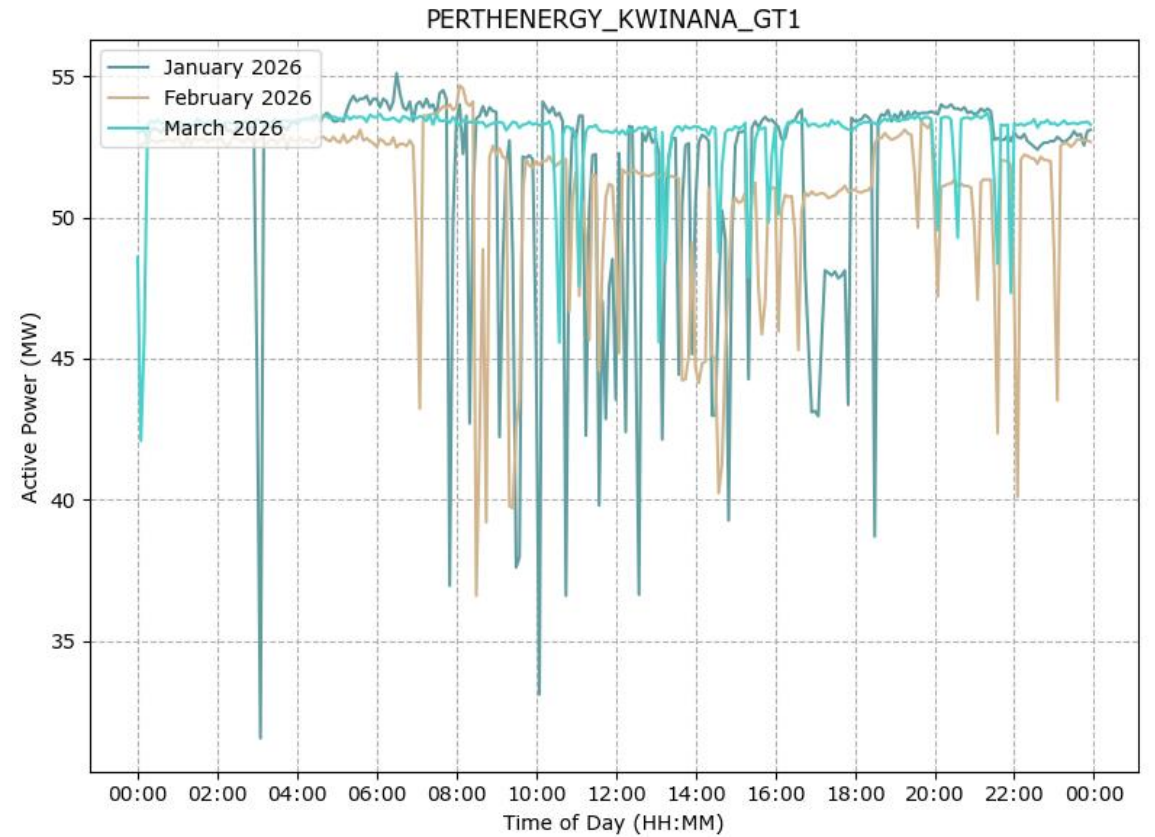
Kwinana Swift Power Station

Gas-fired Scheduled Facility, 109 MW, AGL (Perth Energy)

Generation Duration Curves



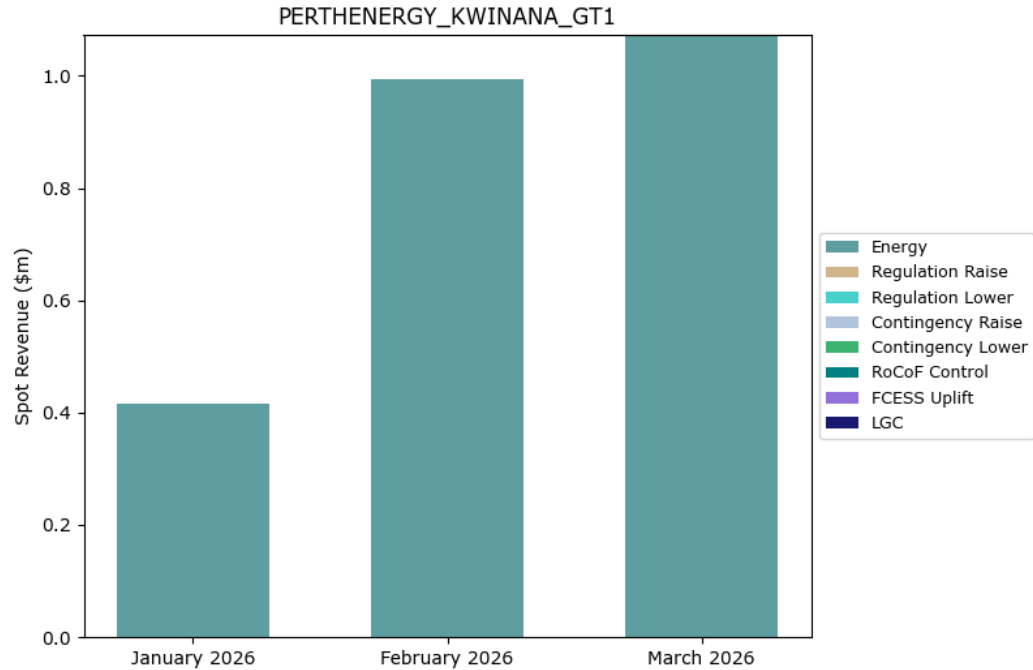
Average Time-of-Day Output



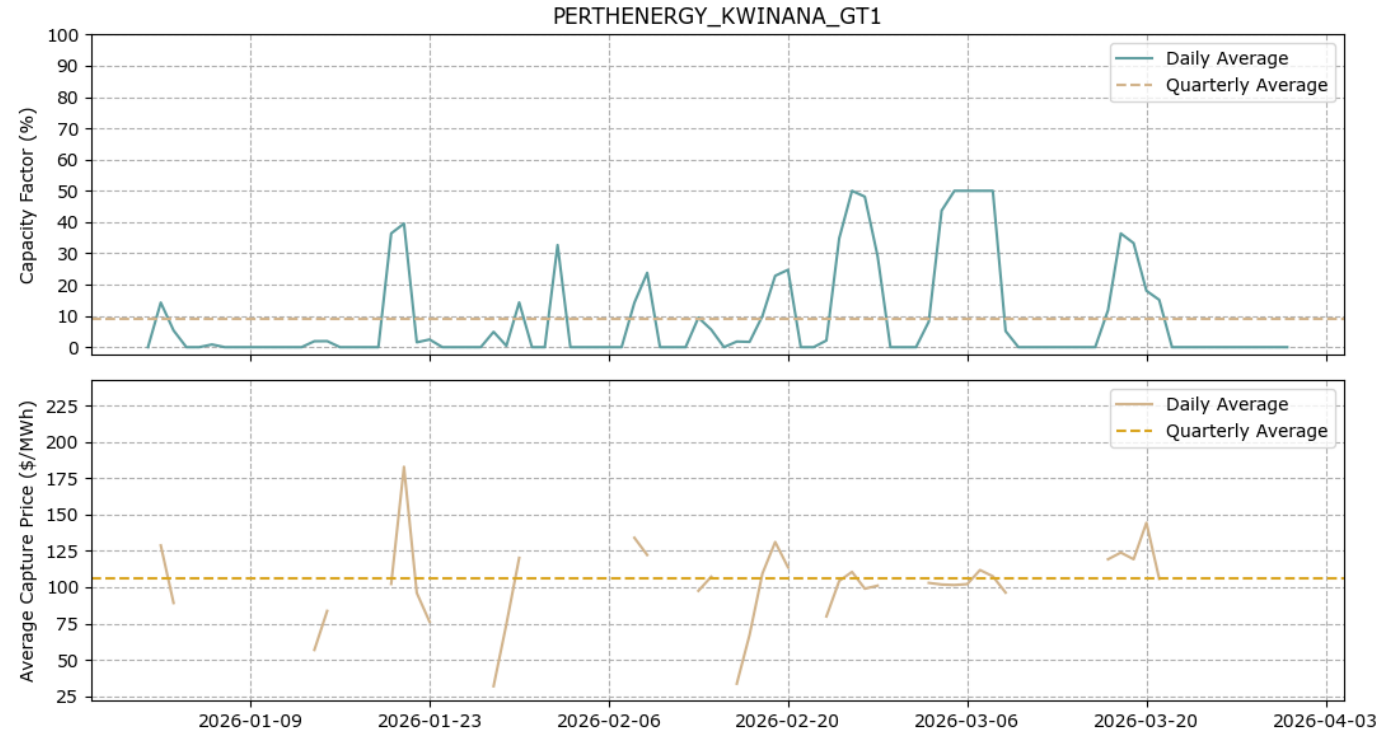
Kwinana Swift Power Station

Gas-fired Scheduled Facility, 109 MW, AGL (Perth Energy)

Facility Merchant Spot Revenue



Daily Capacity Factor and Average Energy Capture Price

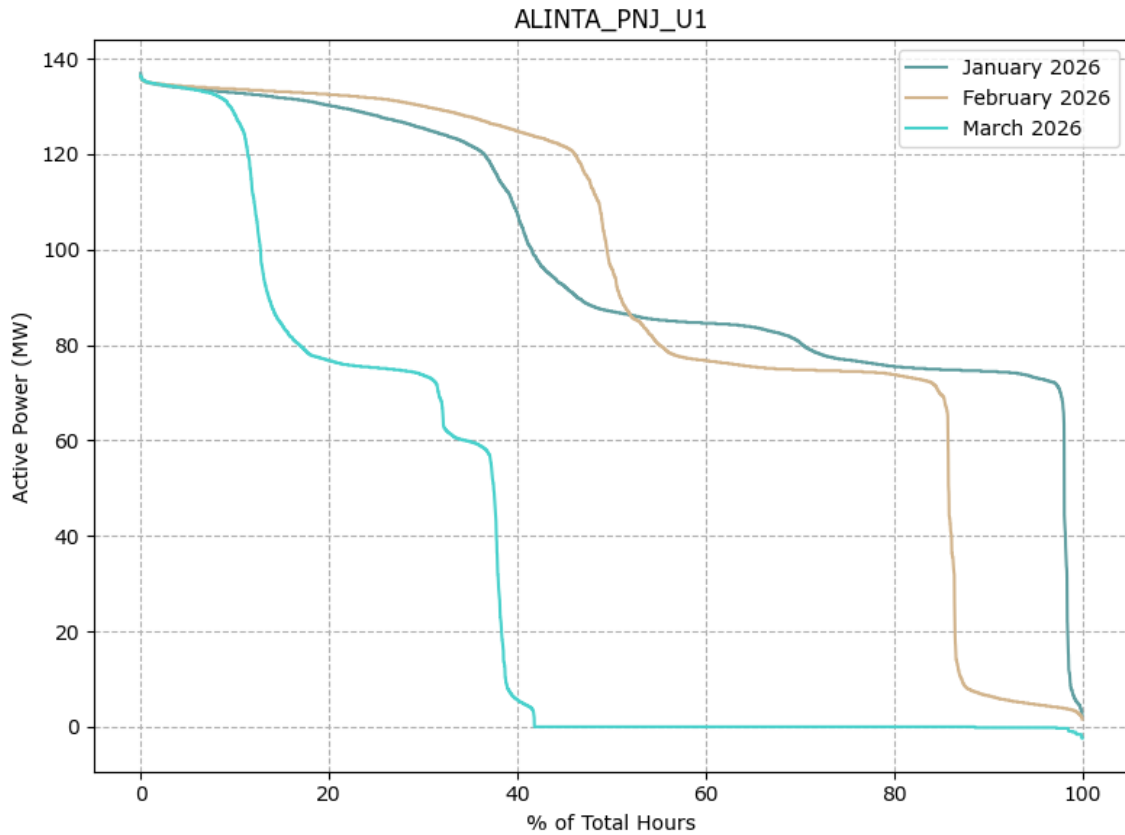


	Jan 2026	Feb 2026	Mar 2026
Energy Generated (GWh)	3.24	8.13	9.72
Total Spot Revenue (\$m)	0.42	0.99	1.07
\$/MWh	\$128.23	\$122.29	\$110.36

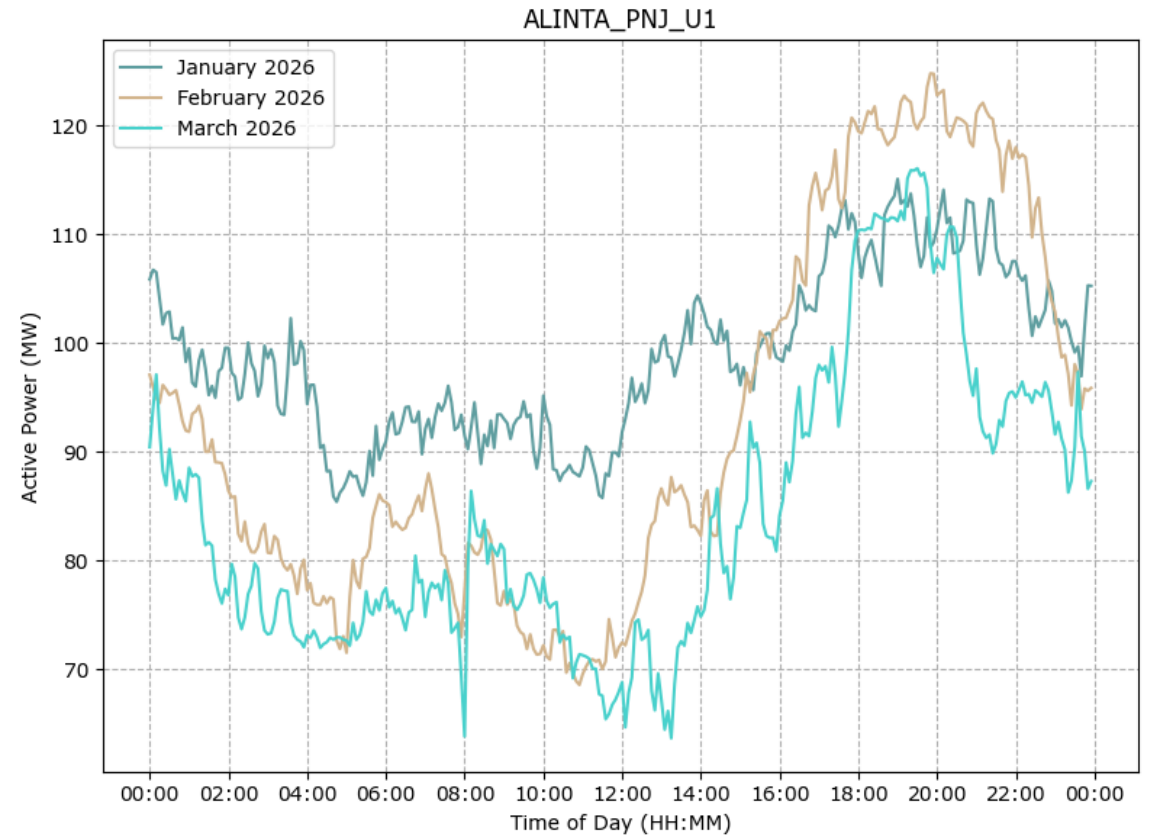
Pinjarra Power Station U1

Gas-fired Scheduled Facility, 143 MW, Alinta Energy

Generation Duration Curves



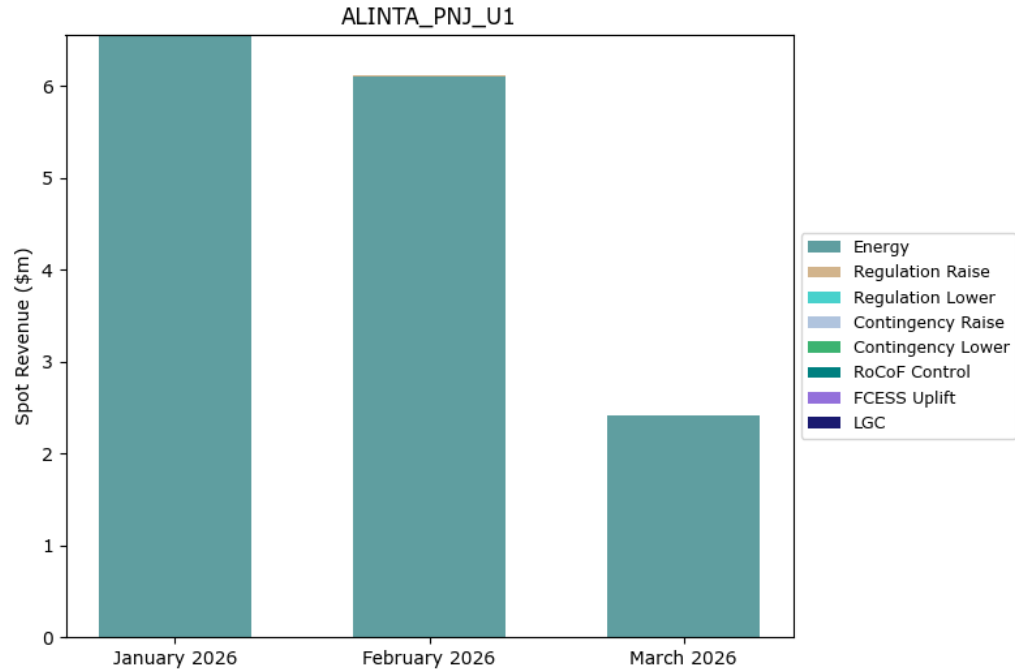
Average Time-of-Day Output



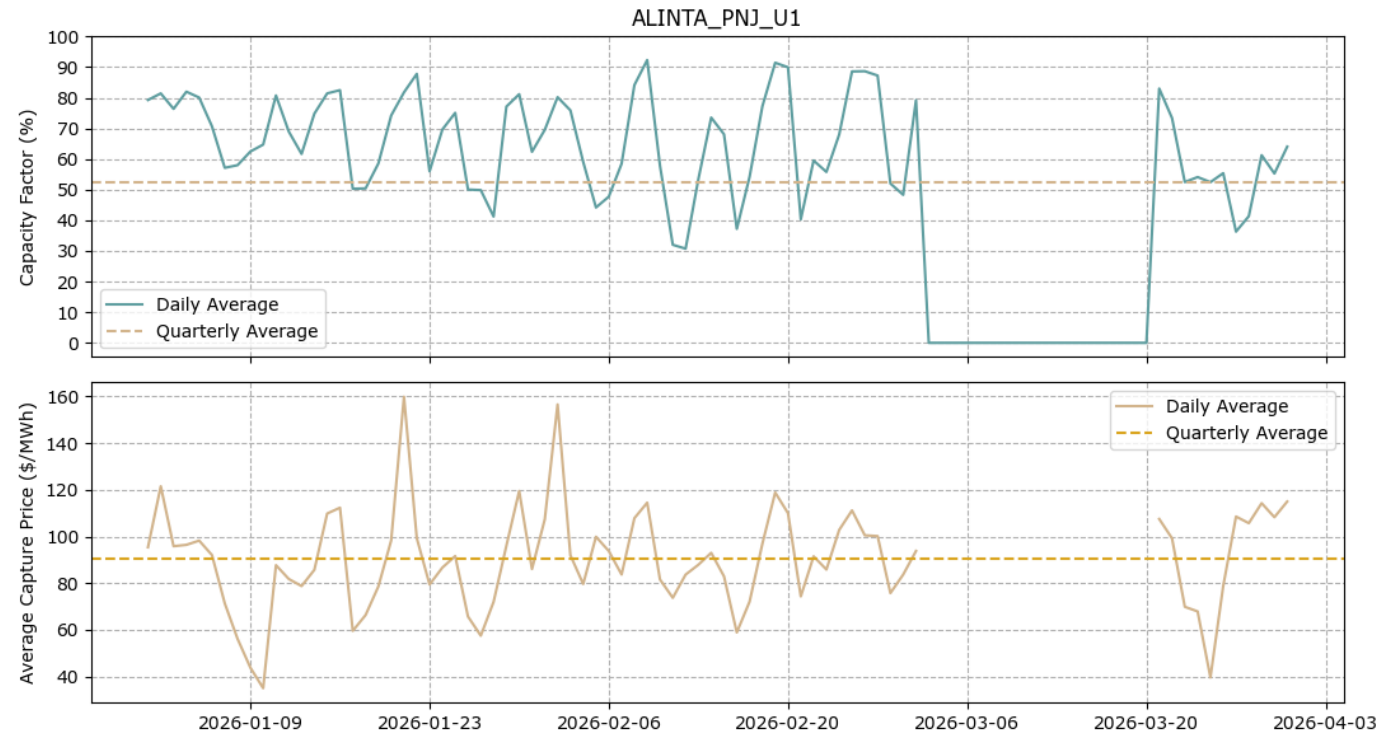
Pinjarra Power Station U1

Gas-fired Scheduled Facility, 143 MW, Alinta Energy

Facility Merchant Spot Revenue



Daily Capacity Factor and Average Energy Capture Price

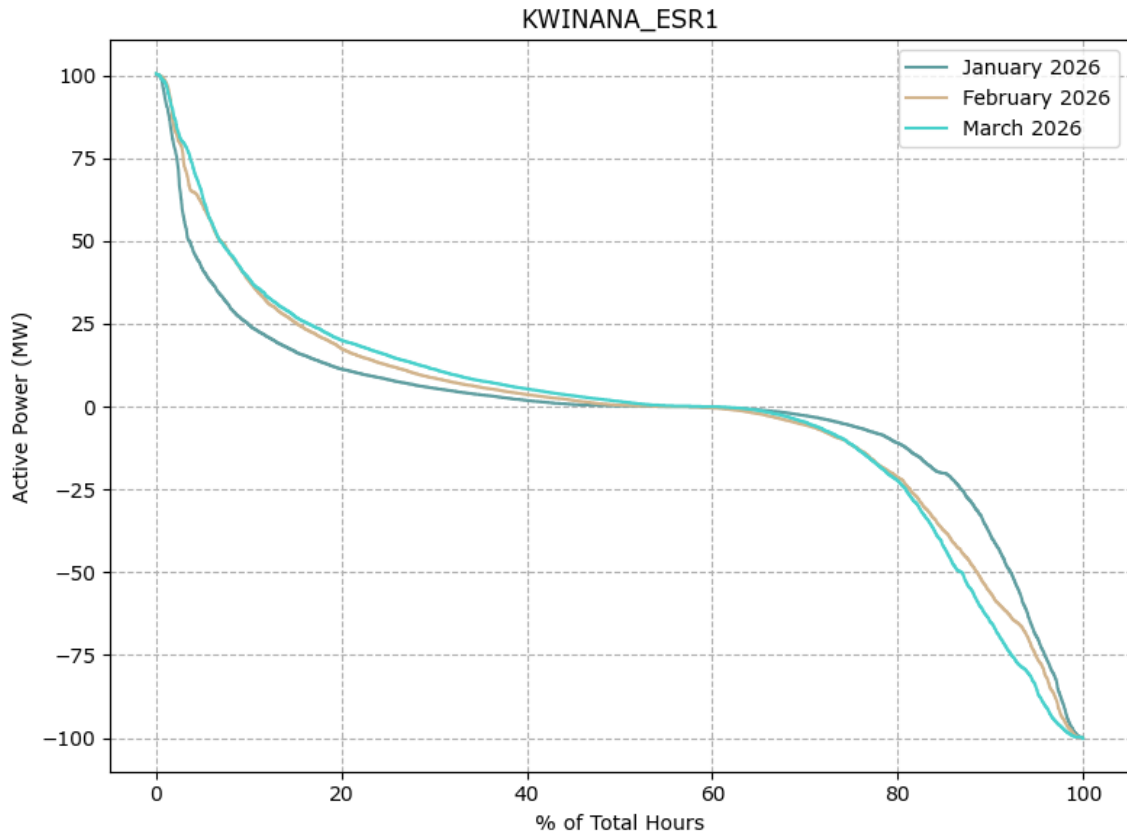


	Jan 2026	Feb 2026	Mar 2026
Energy Generated (GWh)	73.02	62.37	25.96
Total Spot Revenue (\$m)	6.55	6.11	2.41
\$/MWh	\$89.77	\$98.03	\$92.86

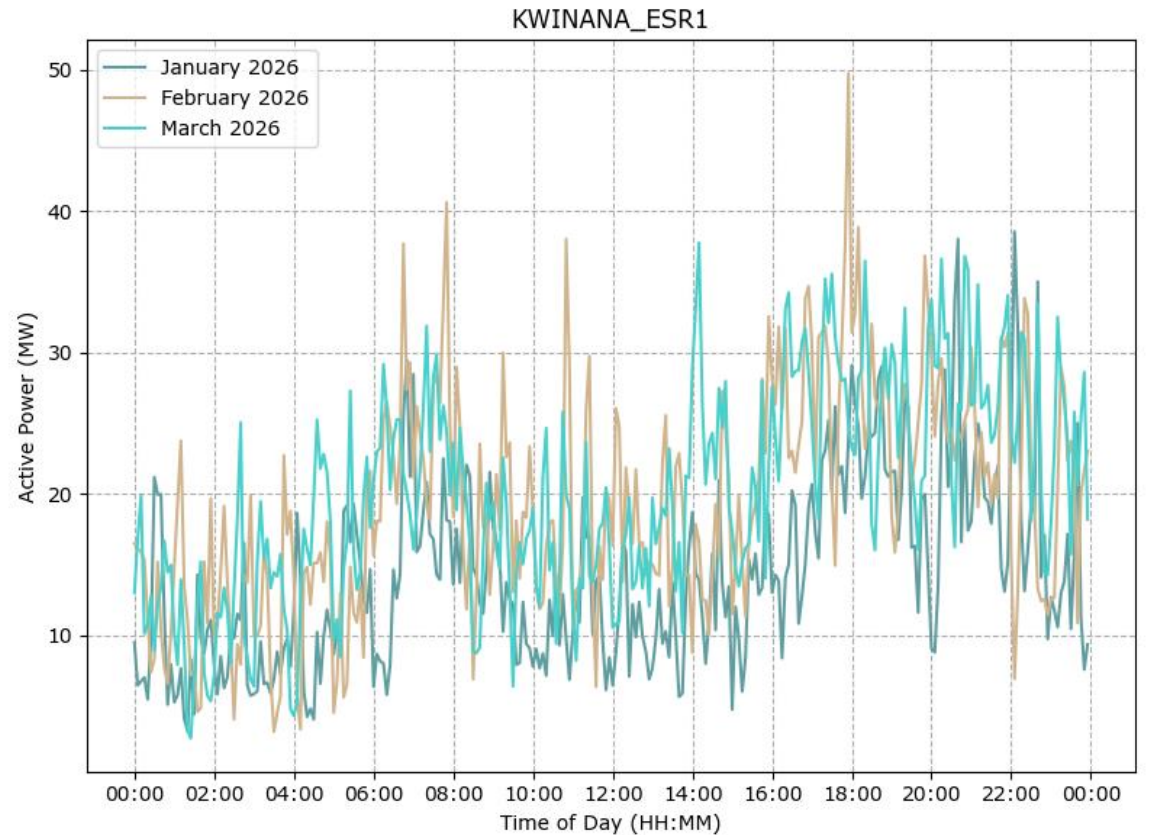
Kwinana BESS 1

Energy Storage Scheduled Facility, 100 MW, Synergy

Generation Duration Curves



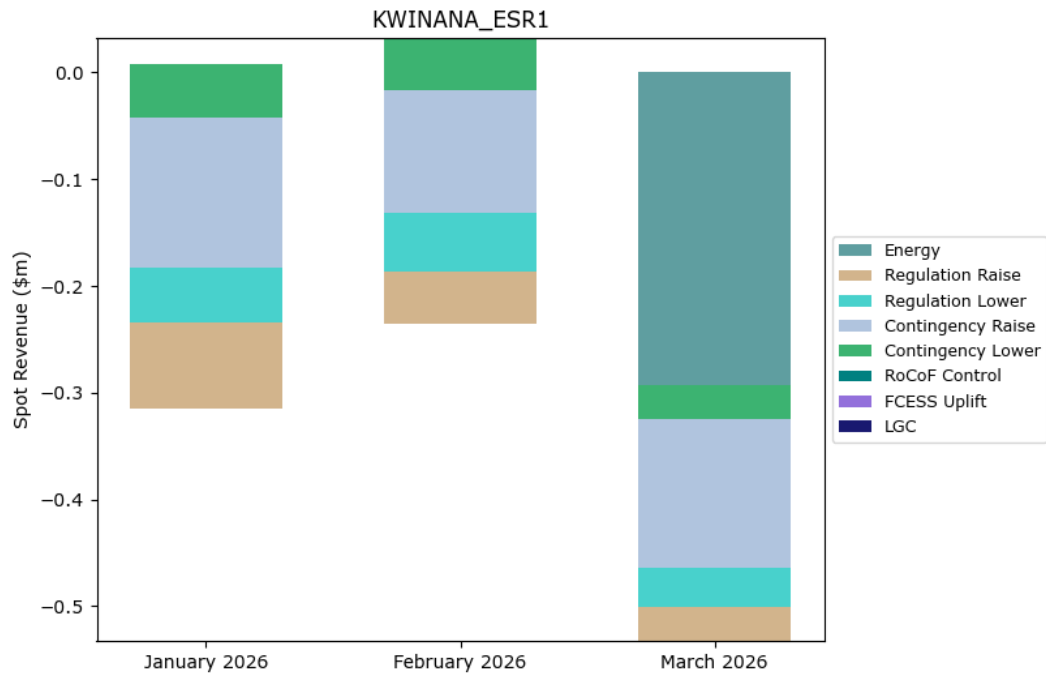
Average Time-of-Day Output



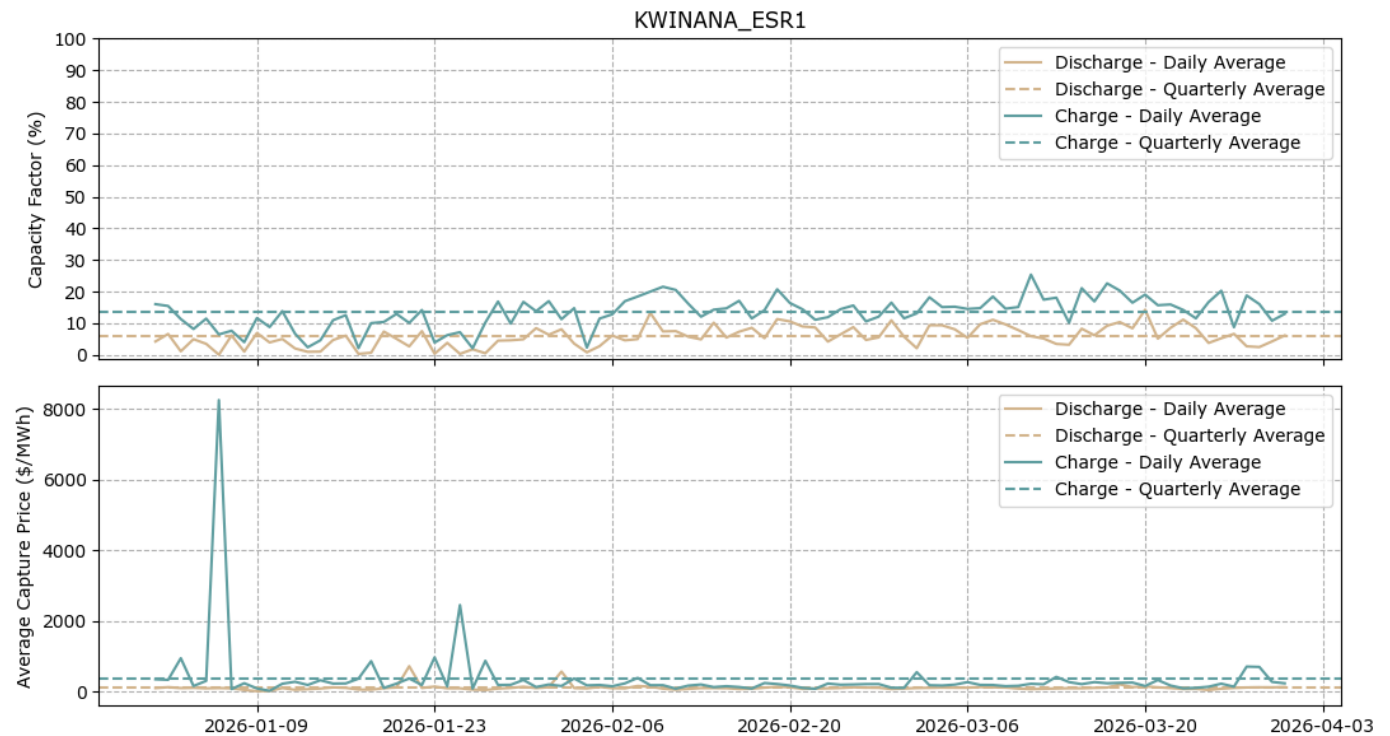
Kwinana BESS 1

Energy Storage Scheduled Facility, 100 MW, Synergy

Facility Merchant Spot Revenue



Daily Capacity Factor and Average Energy Capture Price

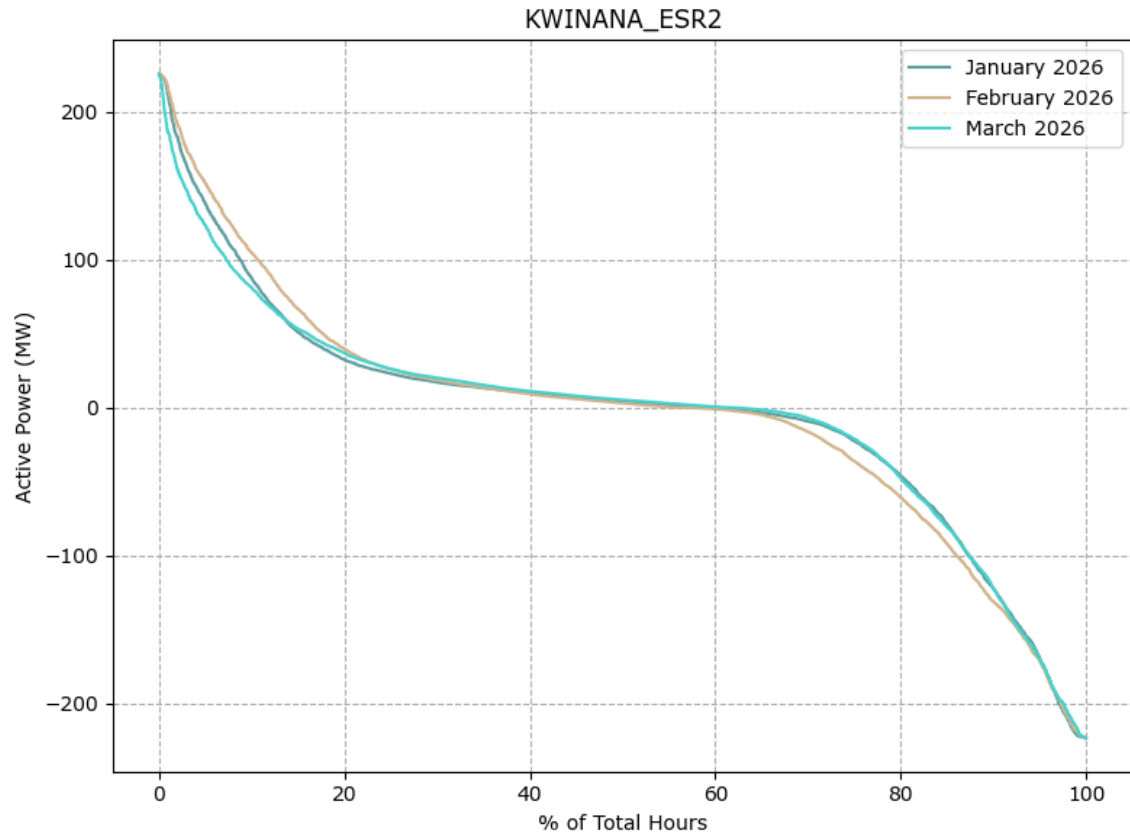


	Jan 2026	Feb 2026	Mar 2026
Total Spot Revenue (\$m)	0.01	0.03	-0.29

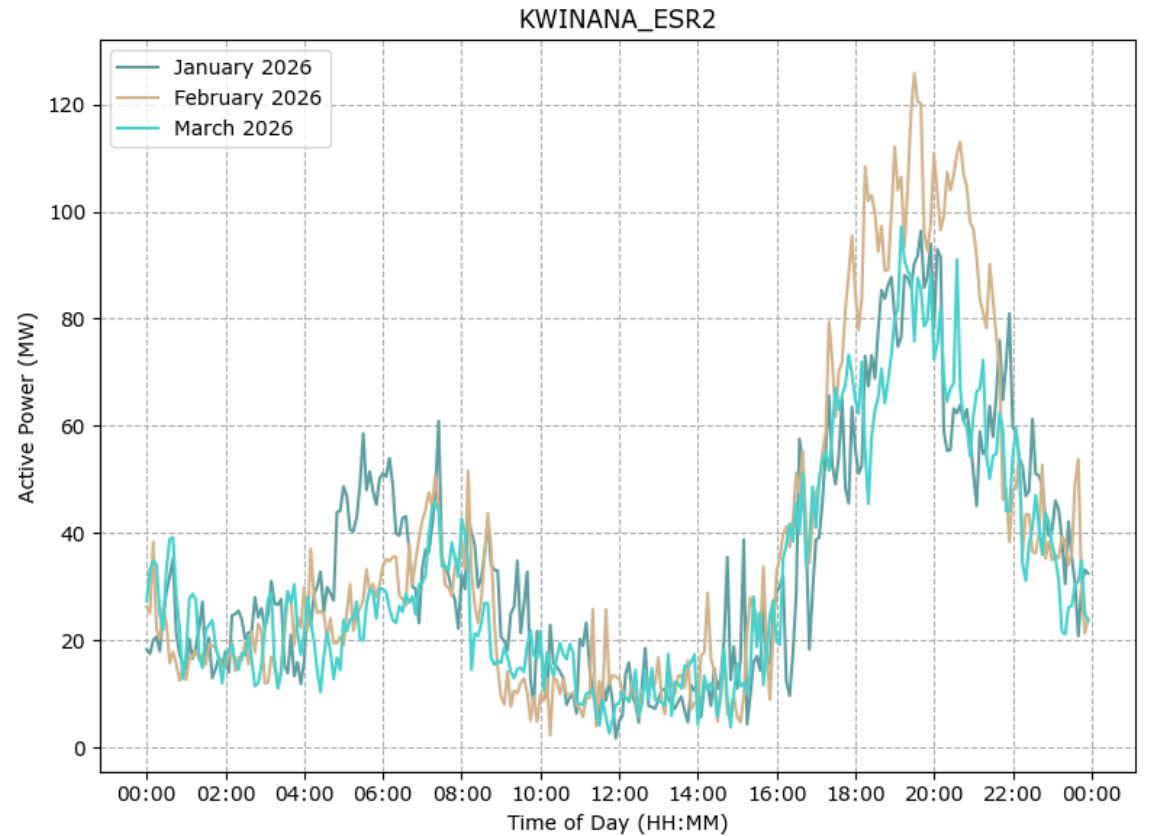
Kwinana BESS 2

Energy Storage Scheduled Facility, 225 MW, Synergy

Generation Duration Curves



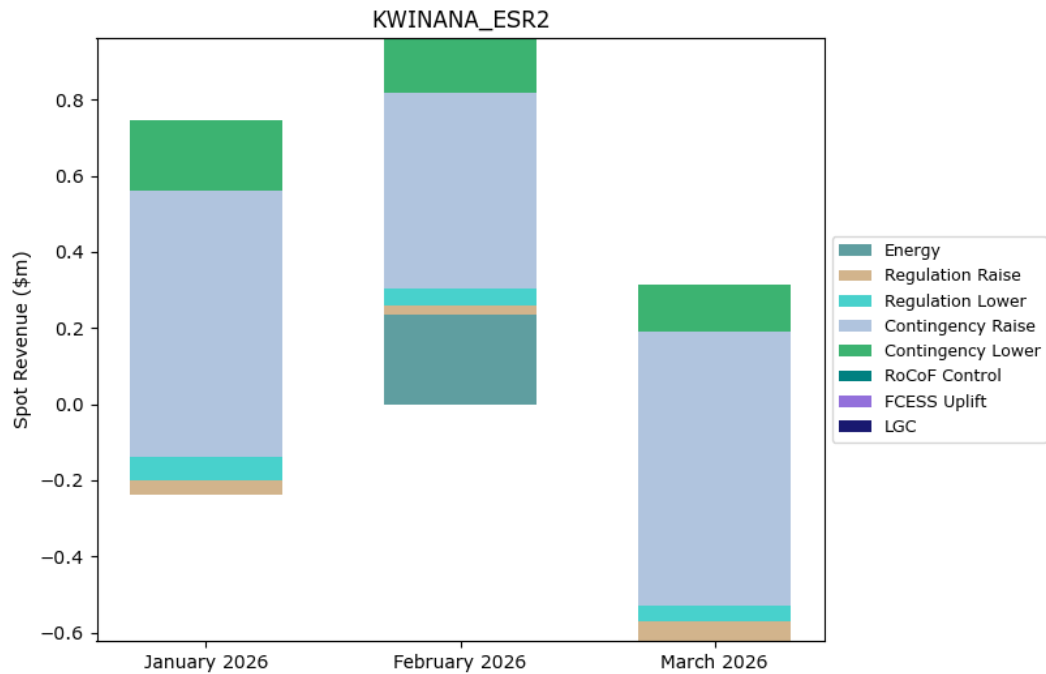
Average Time-of-Day Output



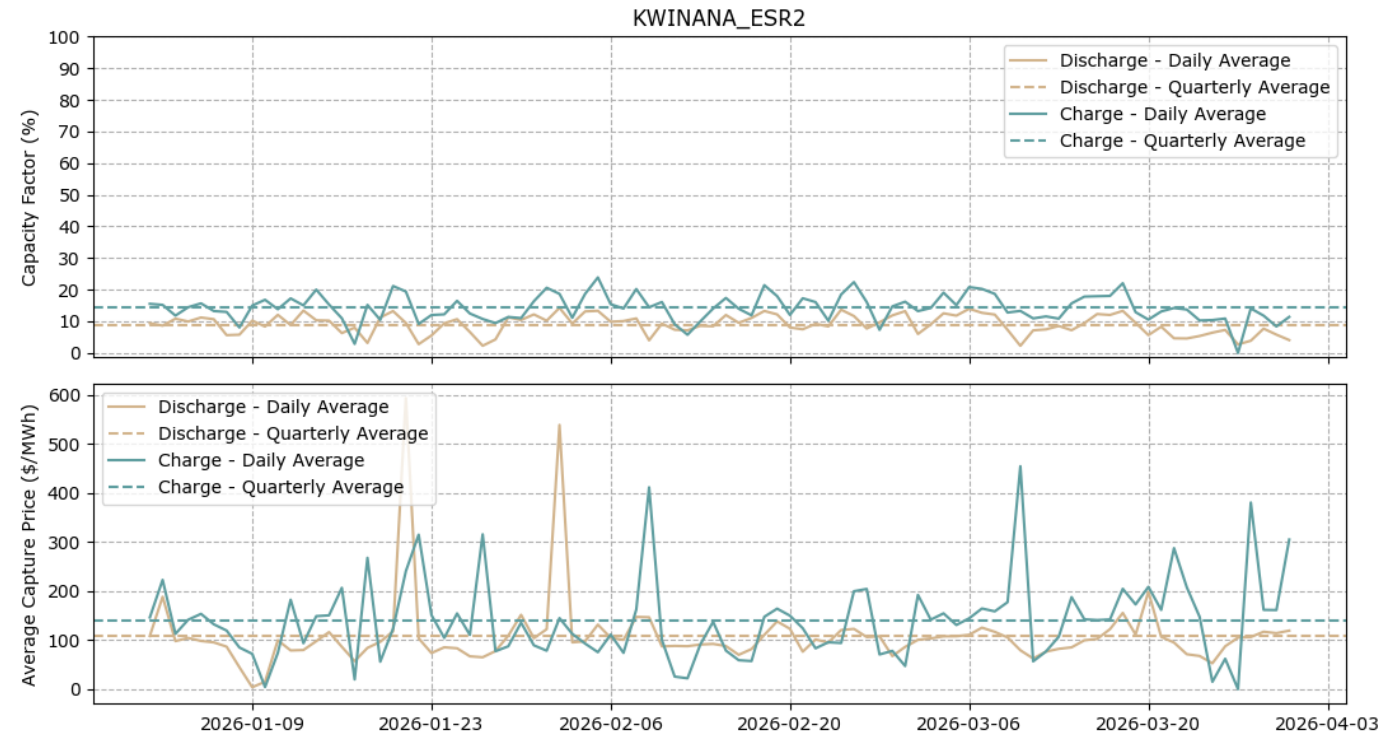
Kwinana BESS 2

Energy Storage Scheduled Facility, 225 MW, Synergy

Facility Merchant Spot Revenue



Daily Capacity Factor and Average Energy Capture Price

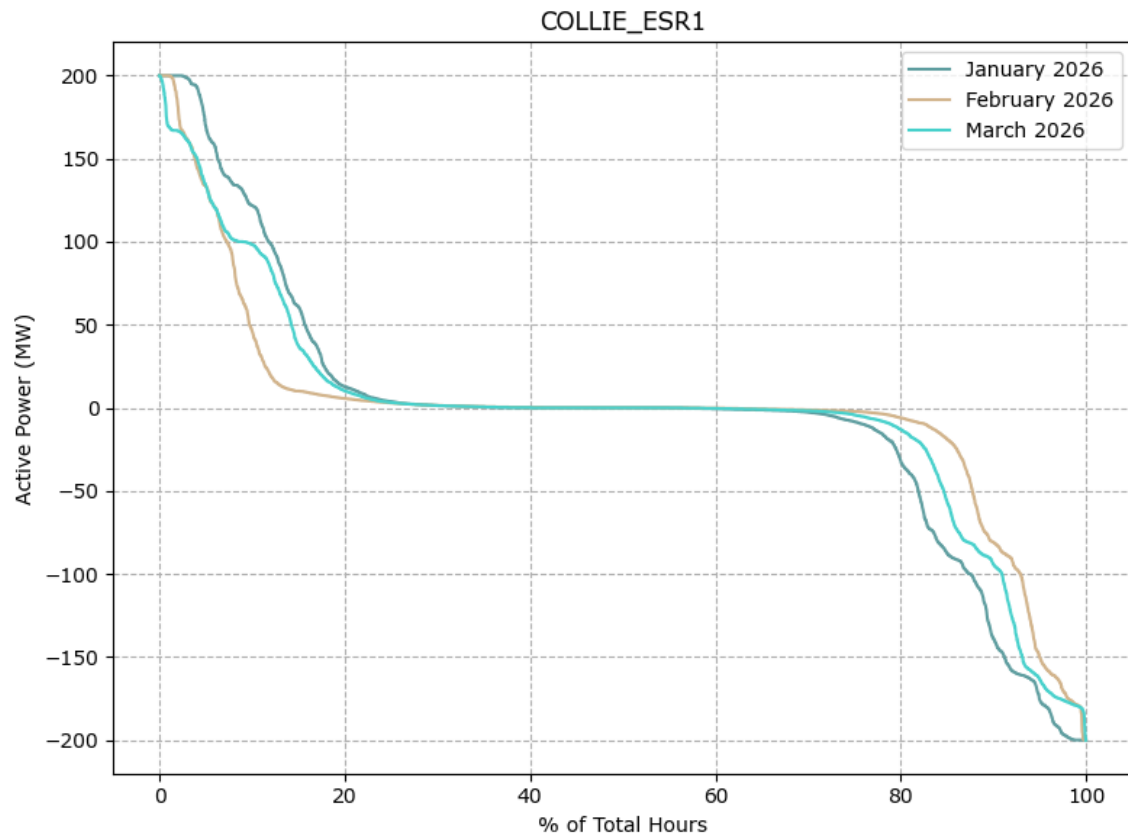


	Jan 2026	Feb 2026	Mar 2026
Total Spot Revenue (\$m)	0.75	0.96	0.31

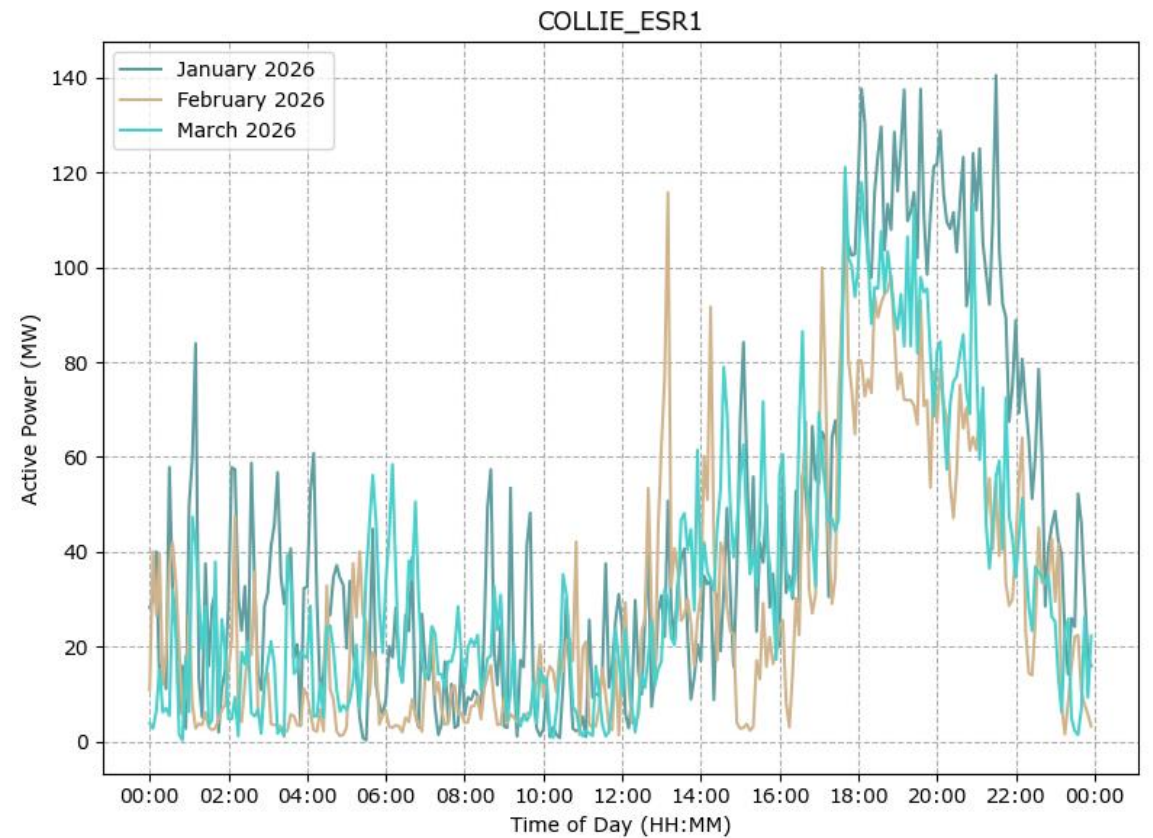
Collie BESS 1

Energy Storage Scheduled Facility, 200 MW, Neoen

Generation Duration Curves



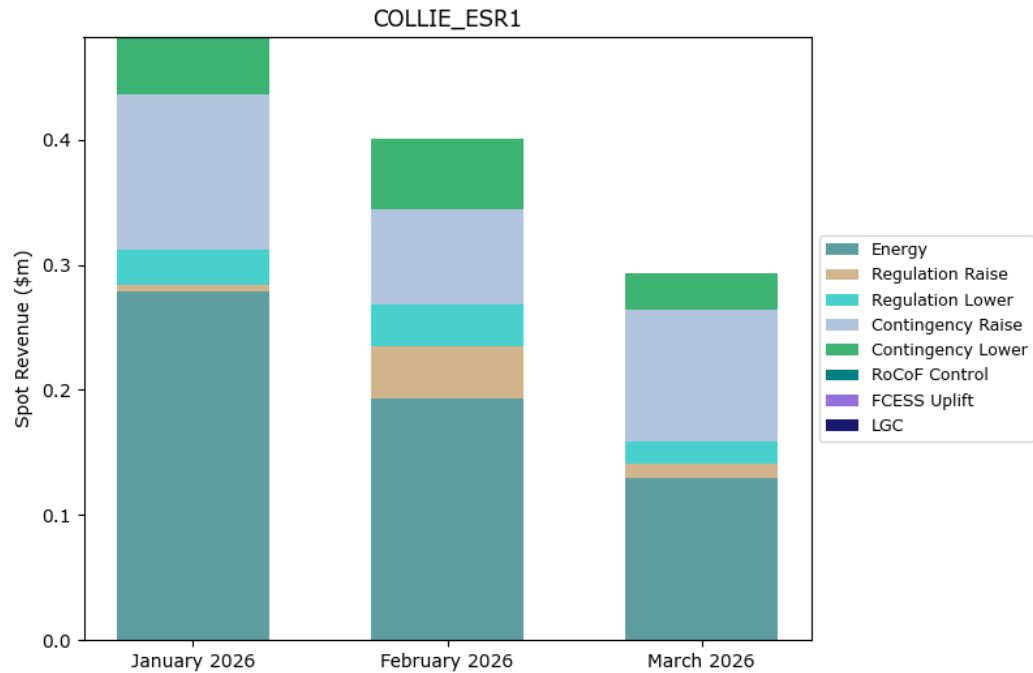
Average Time-of-Day Output



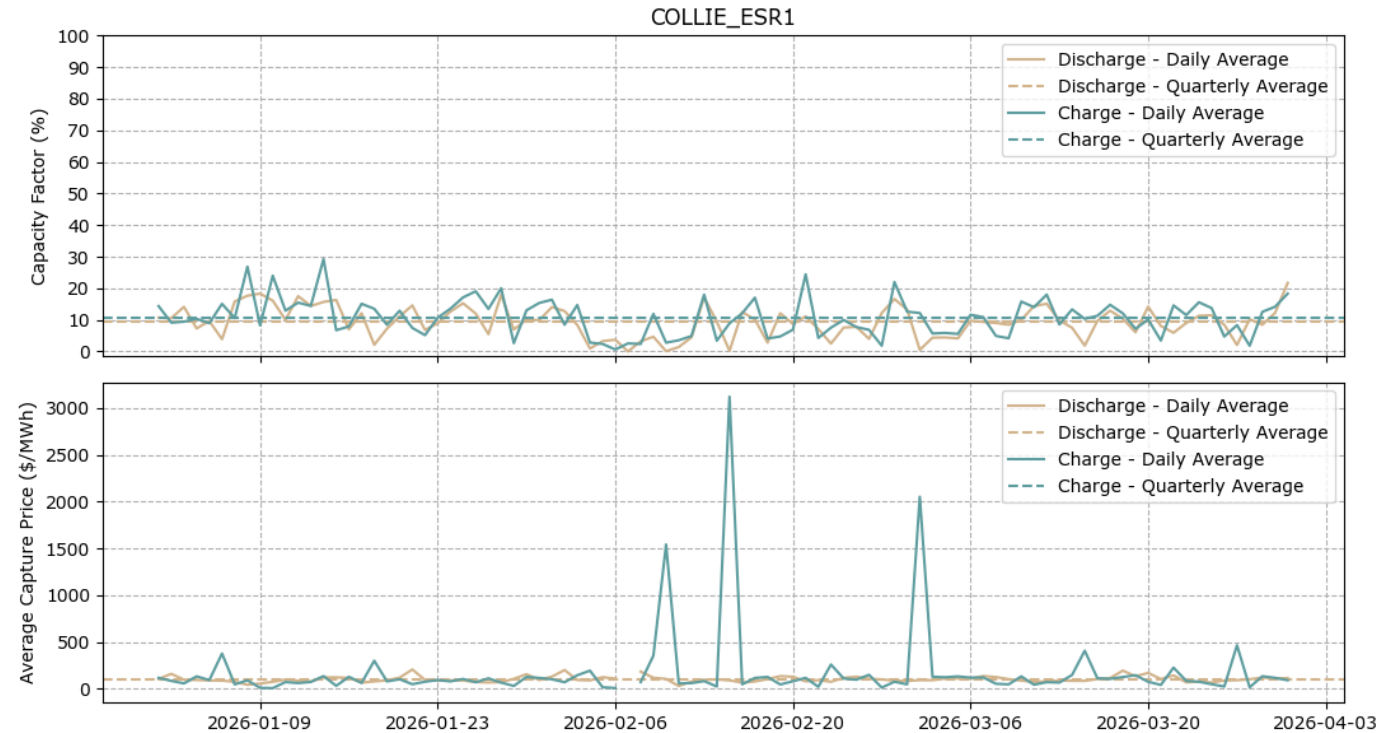
Collie BESS 1

Energy Storage Scheduled Facility, 200 MW, Neoen

Facility Merchant Spot Revenue



Daily Capacity Factor and Average Energy Capture Price

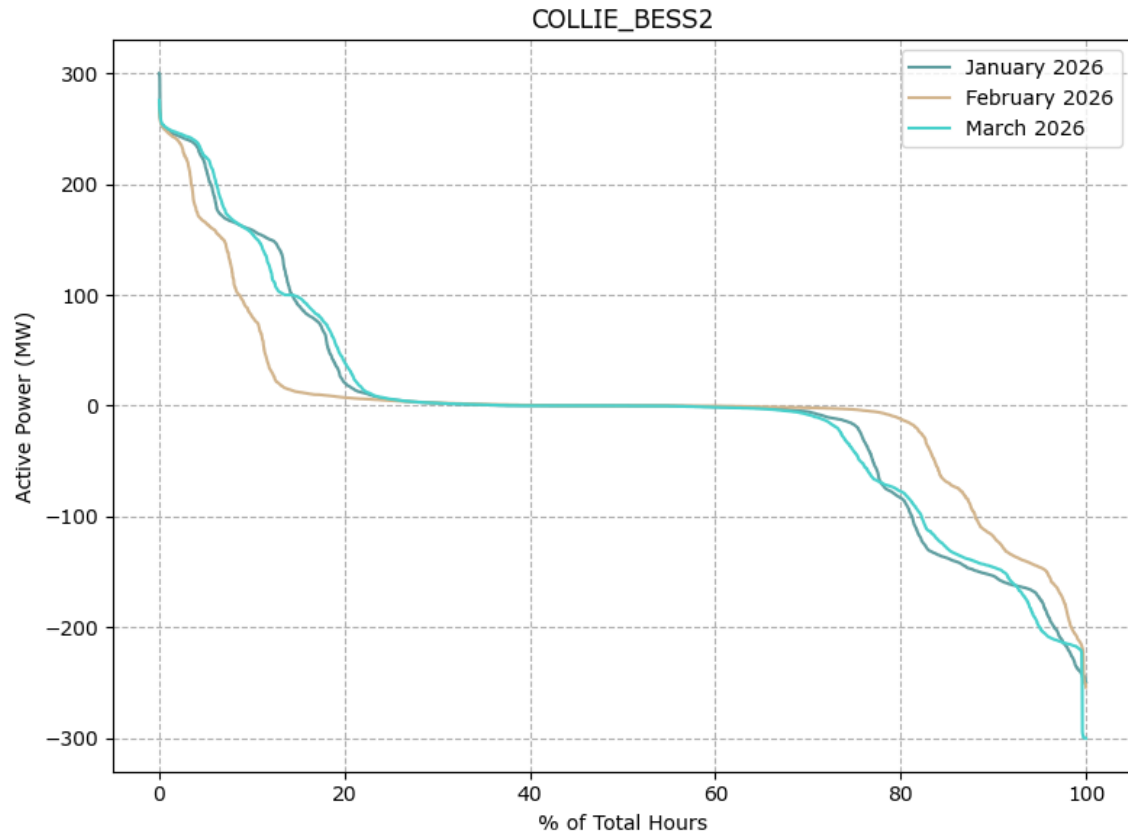


	Jan 2026	Feb 2026	Mar 2026
Total Spot Revenue (\$m)	0.48	0.40	0.29

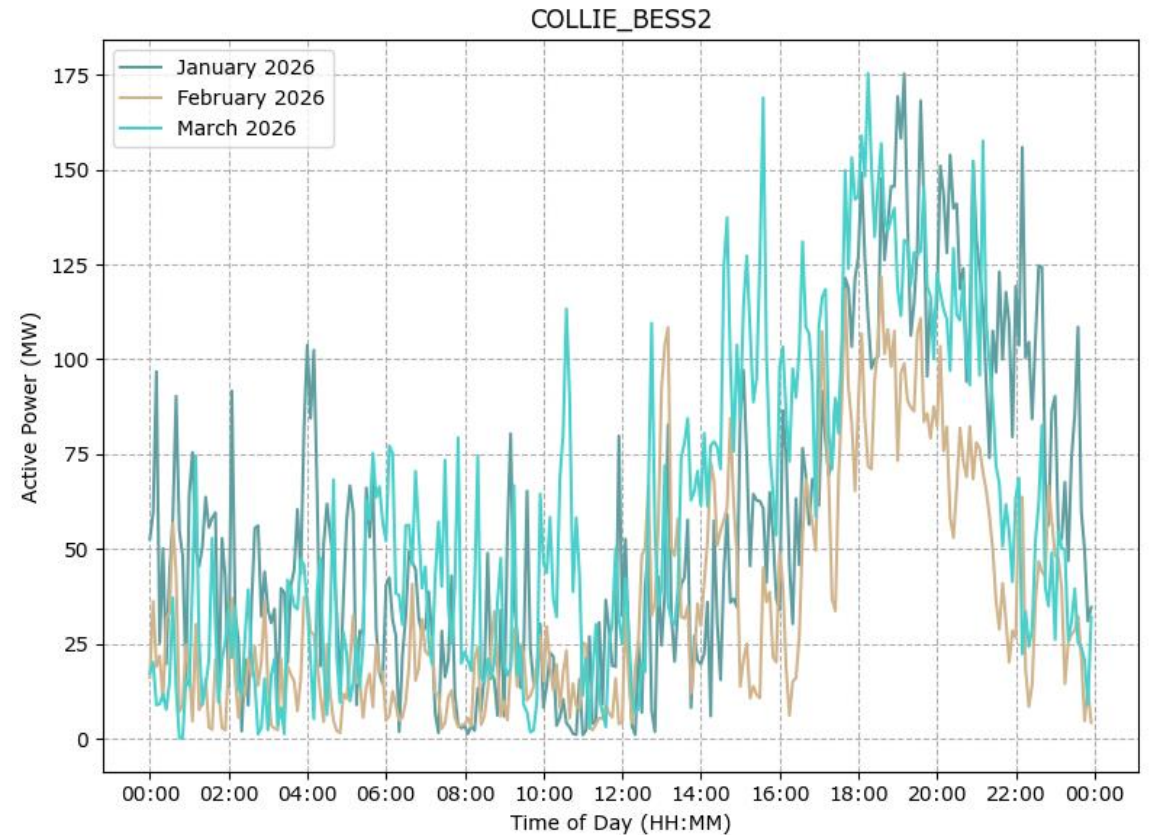
Collie BESS 2

Energy Storage Scheduled Facility, 341 MW, Neoen

Generation Duration Curves



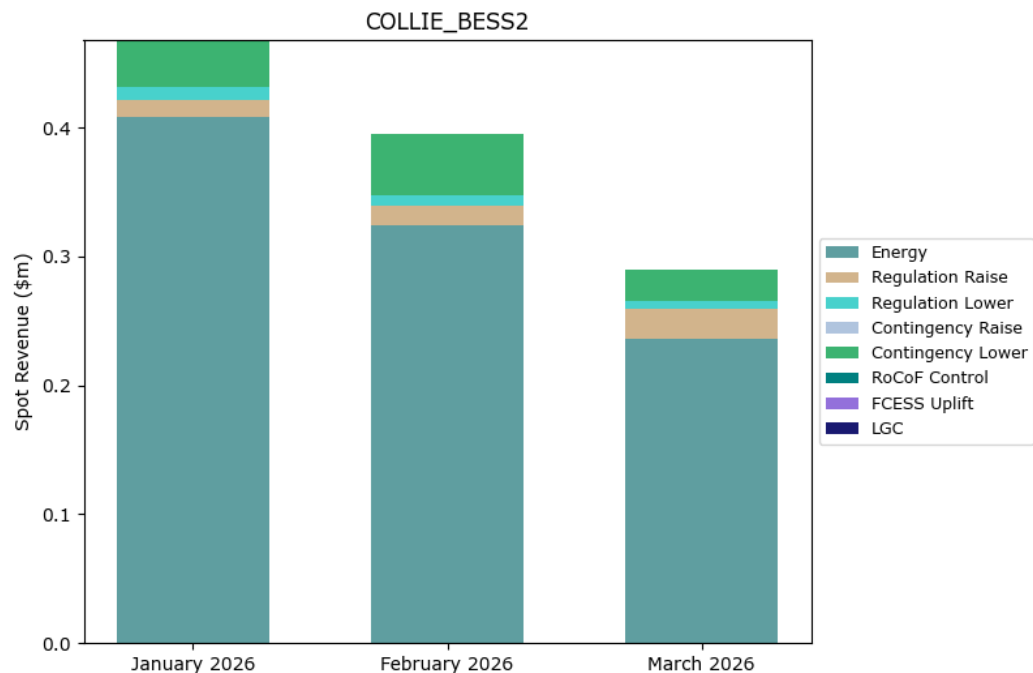
Average Time-of-Day Output



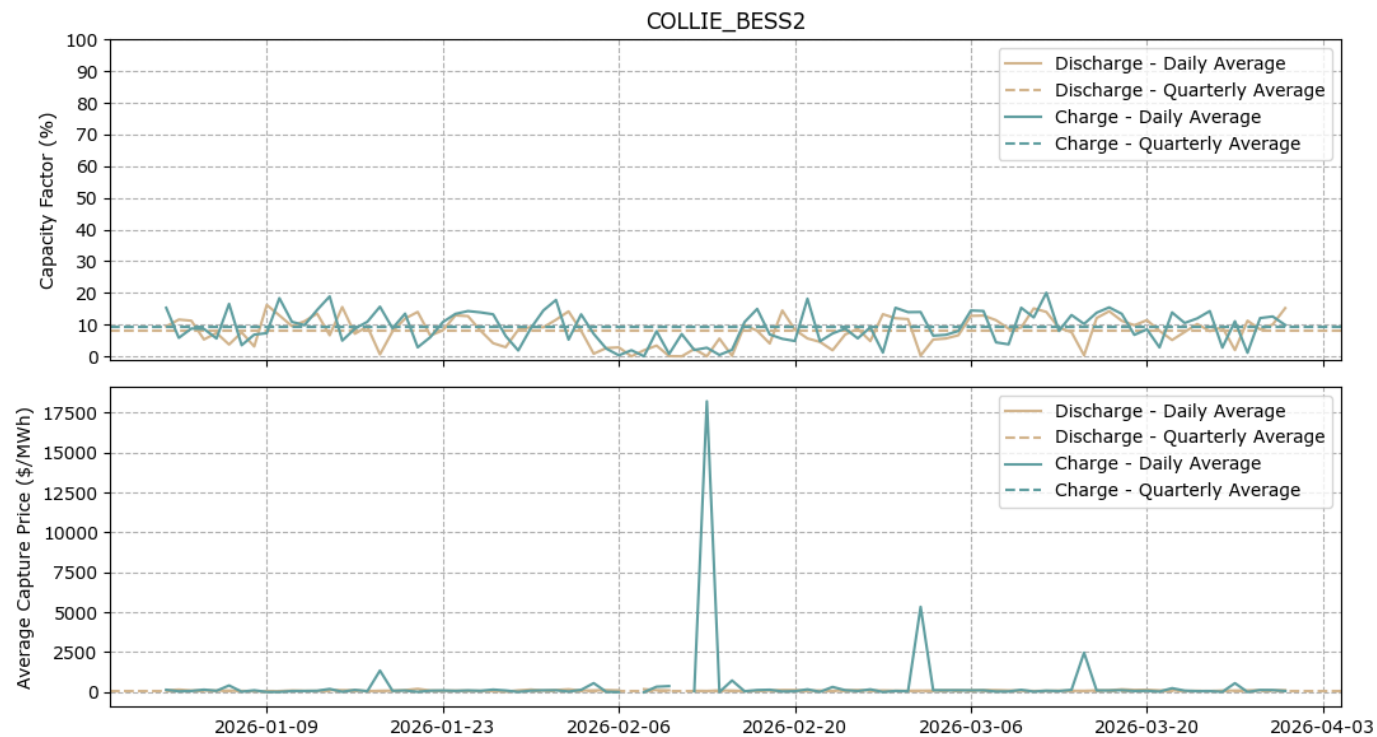
Collie BESS 2

Energy Storage Scheduled Facility, 341 MW, Neoen

Facility Merchant Spot Revenue



Daily Capacity Factor and Average Energy Capture Price

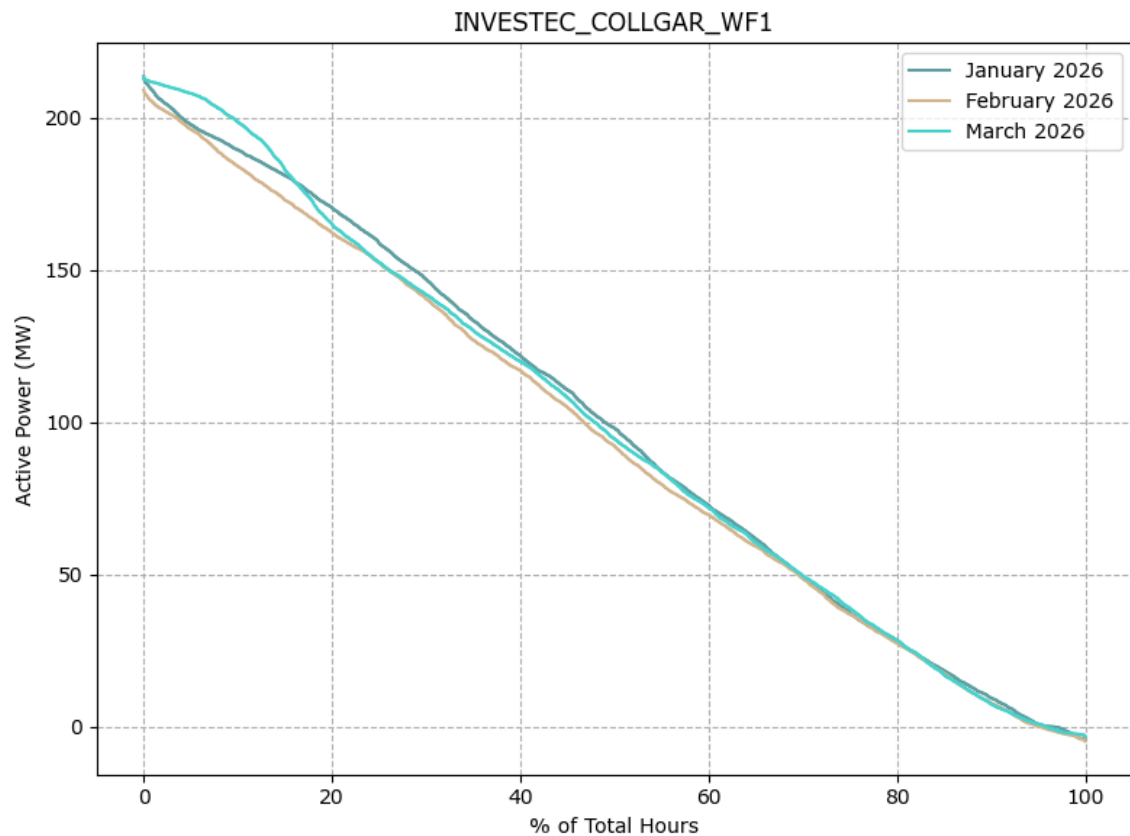


	Jan 2026	Feb 2026	Mar 2026
Total Spot Revenue (\$m)	0.47	0.40	0.29

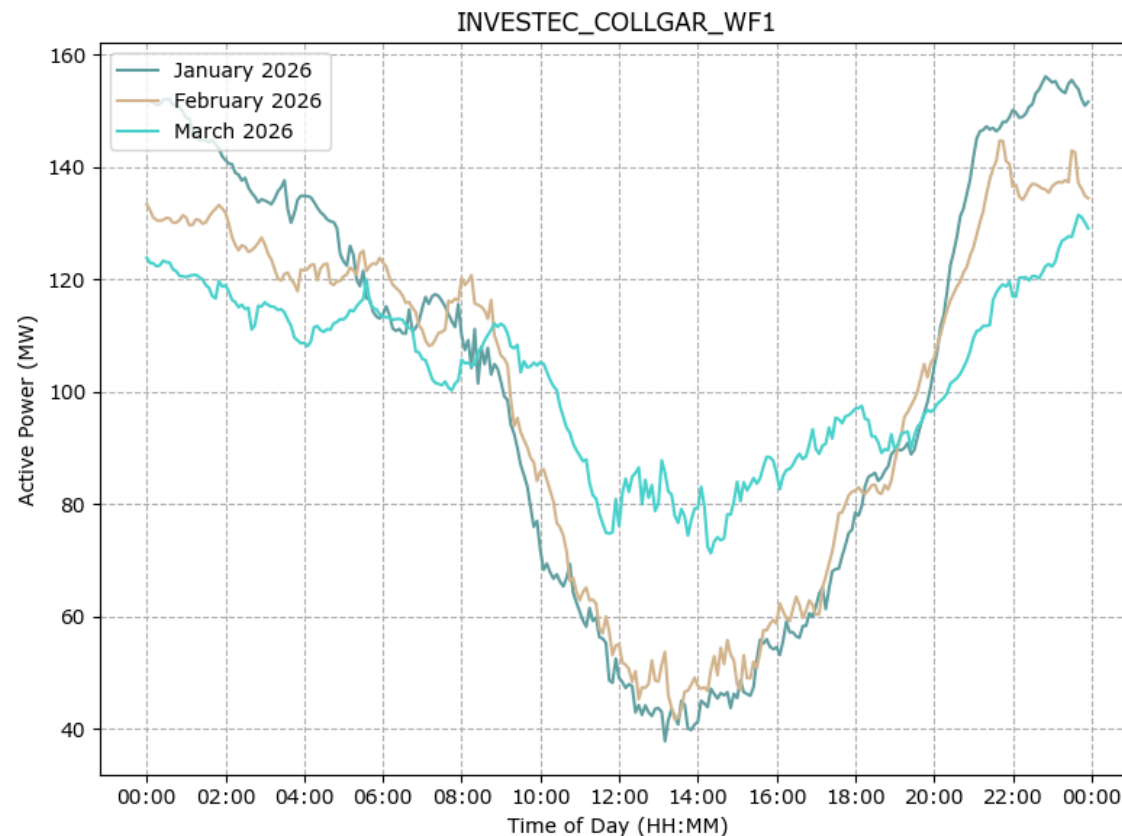
Collgar Wind Farm

Wind Semi-Scheduled Facility, 218.5 MW, Collgar Renewables

Generation Duration Curves



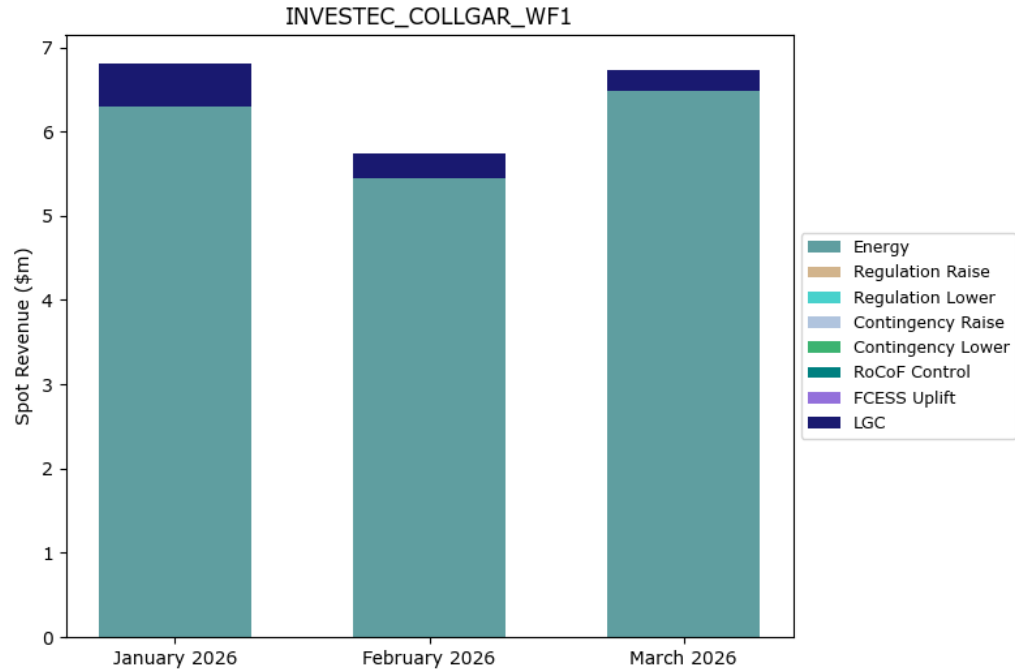
Average Time-of-Day Output



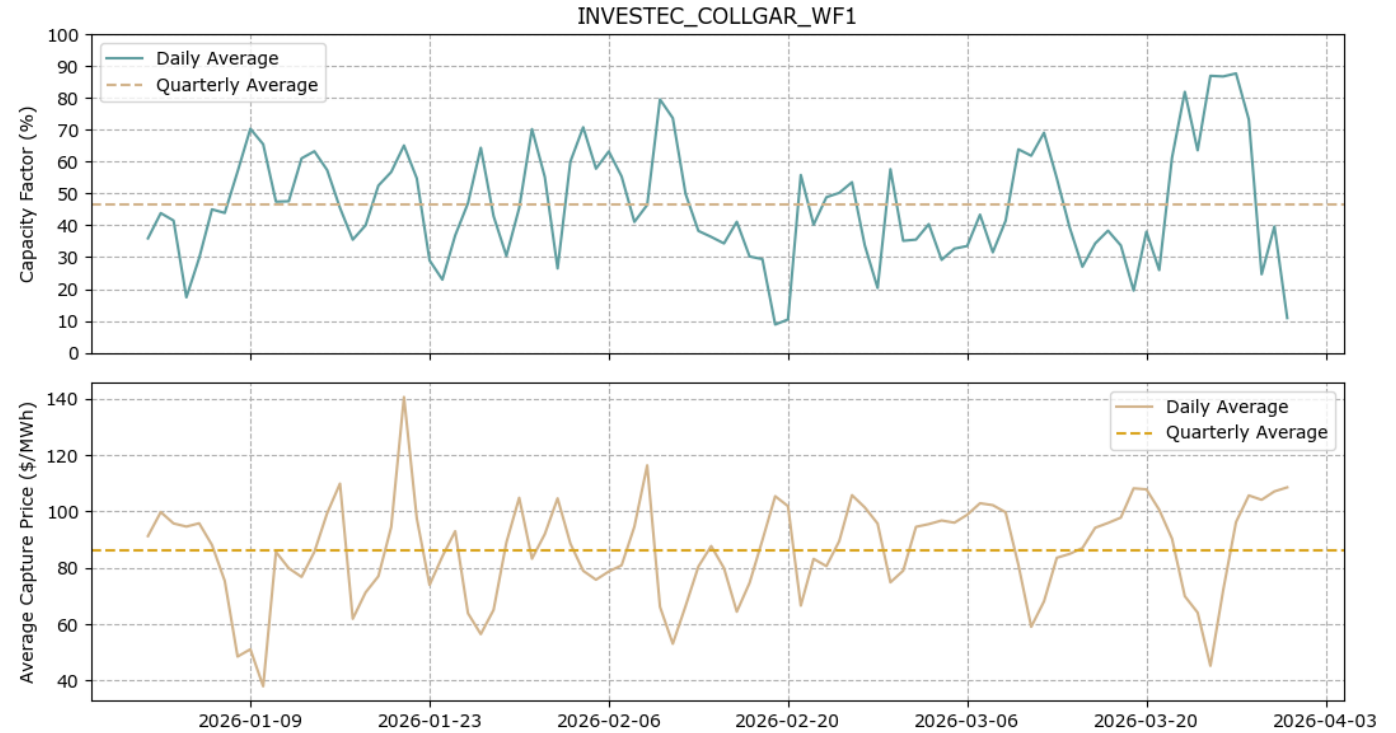
Collgar Wind Farm

Wind Semi-Scheduled Facility, 218.5 MW, Collgar Renewables

Facility Merchant Spot Revenue



Daily Capacity Factor and Average Energy Capture Price

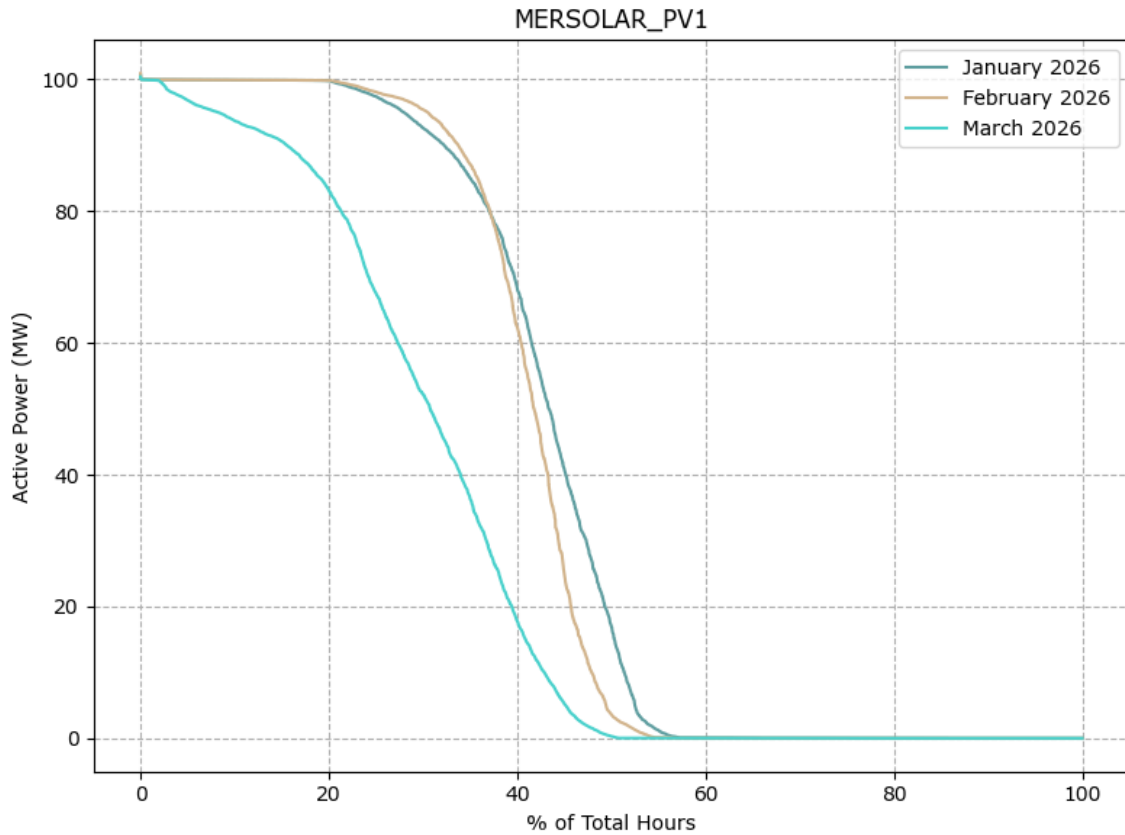


	Jan 2026	Feb 2026	Mar 2026
Energy Generated (GWh)	76.90	66.56	75.82
Total Spot Revenue (\$m)	6.81	5.75	6.74
\$/MWh	\$88.54	\$86.35	\$88.86

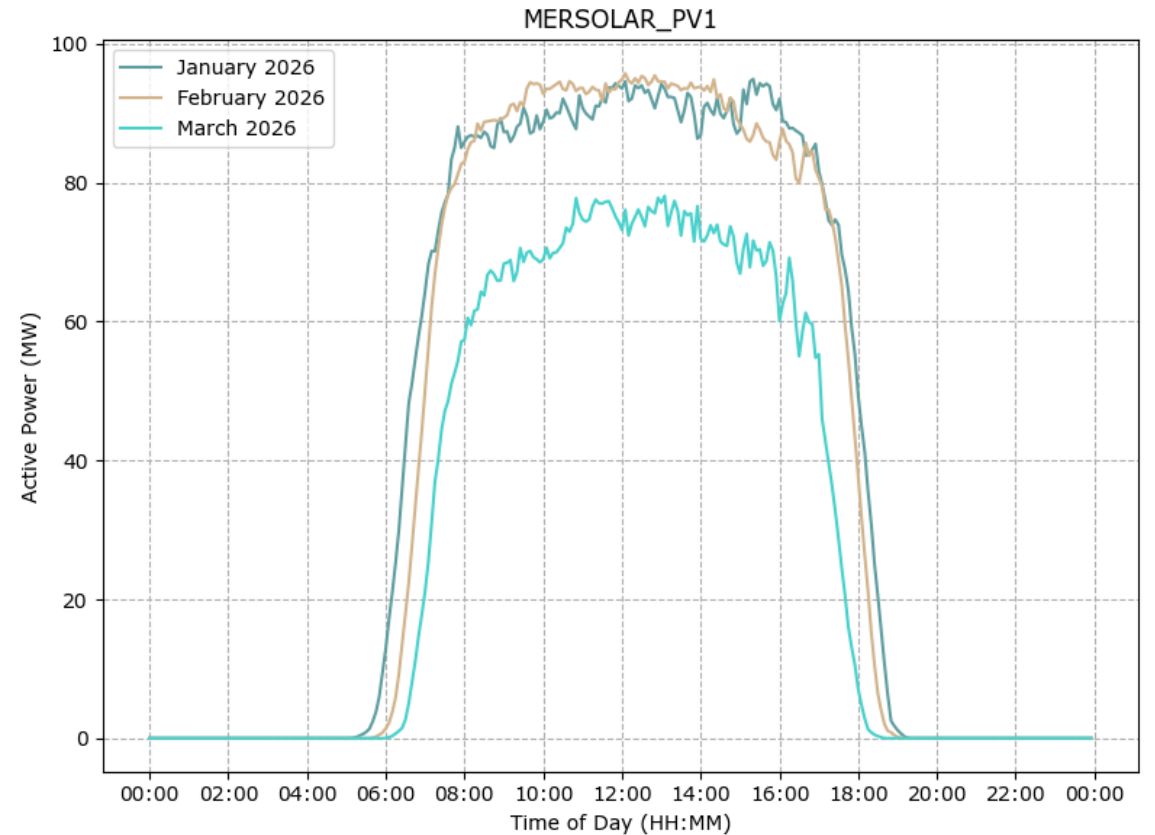
Merredin Solar Farm

Solar PV Semi-Scheduled Facility, 100 MW, SUN Energy

Generation Duration Curves



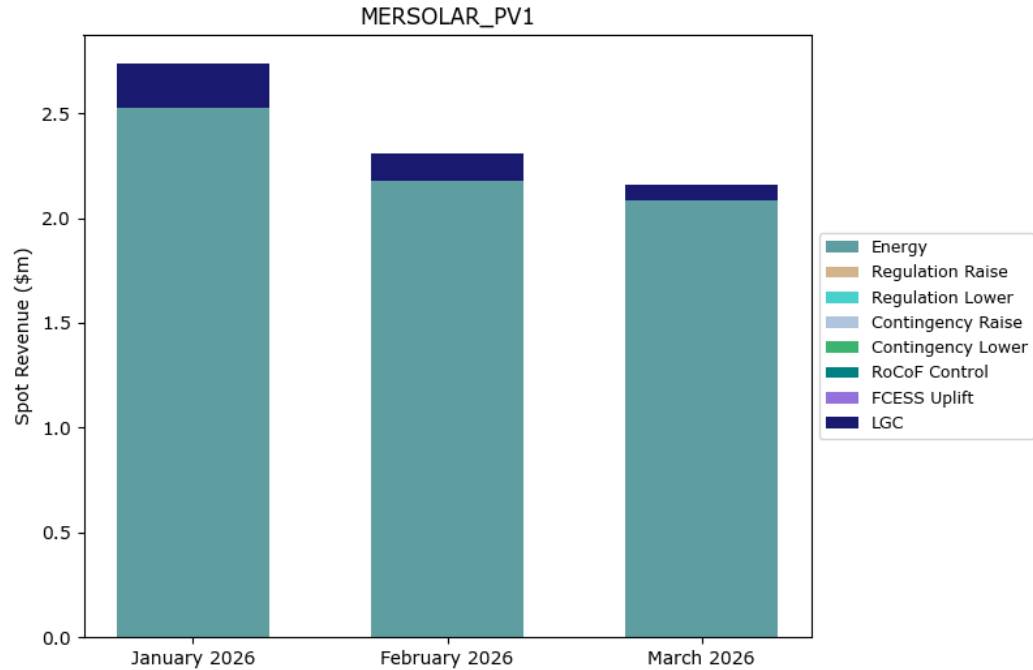
Average Time-of-Day Output



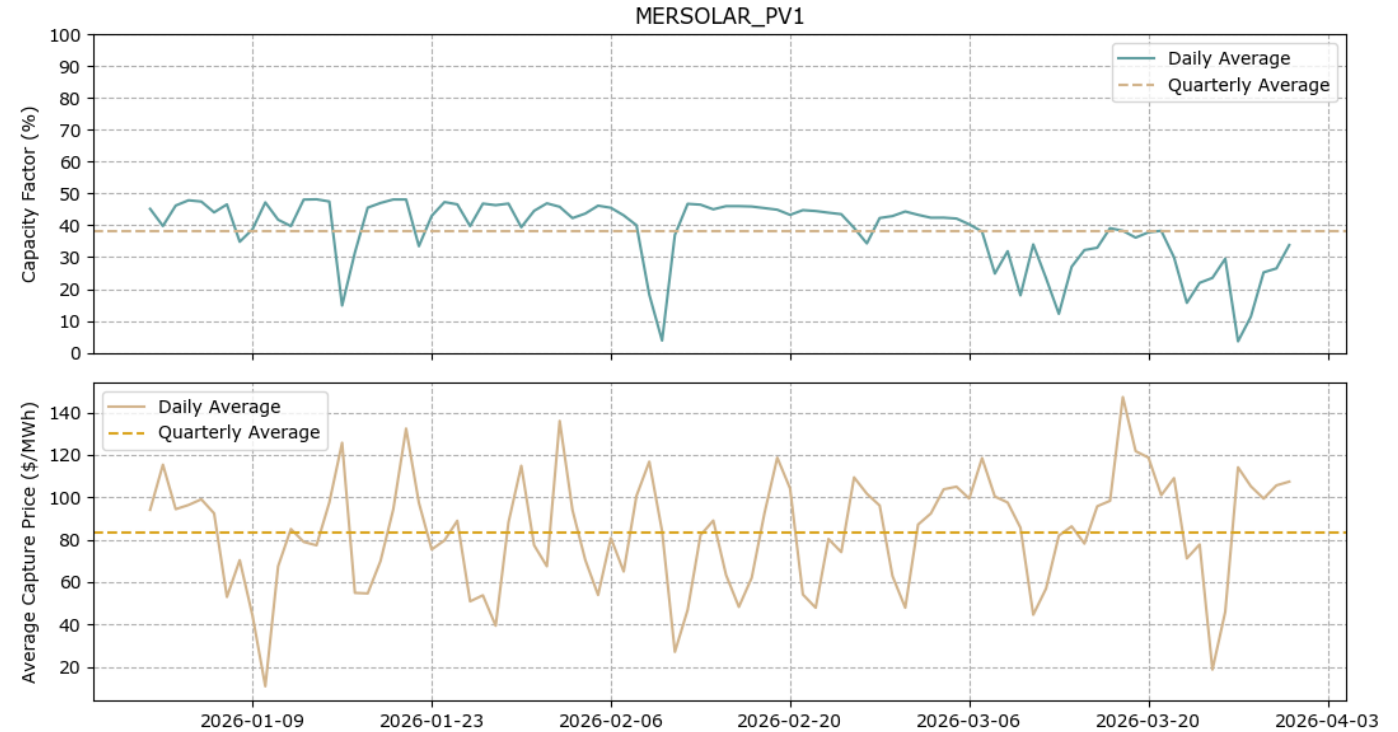
Merredin Solar Farm

Solar PV Semi-Scheduled Facility, 100 MW, SUN Energy

Facility Merchant Spot Revenue



Daily Capacity Factor and Average Energy Capture Price

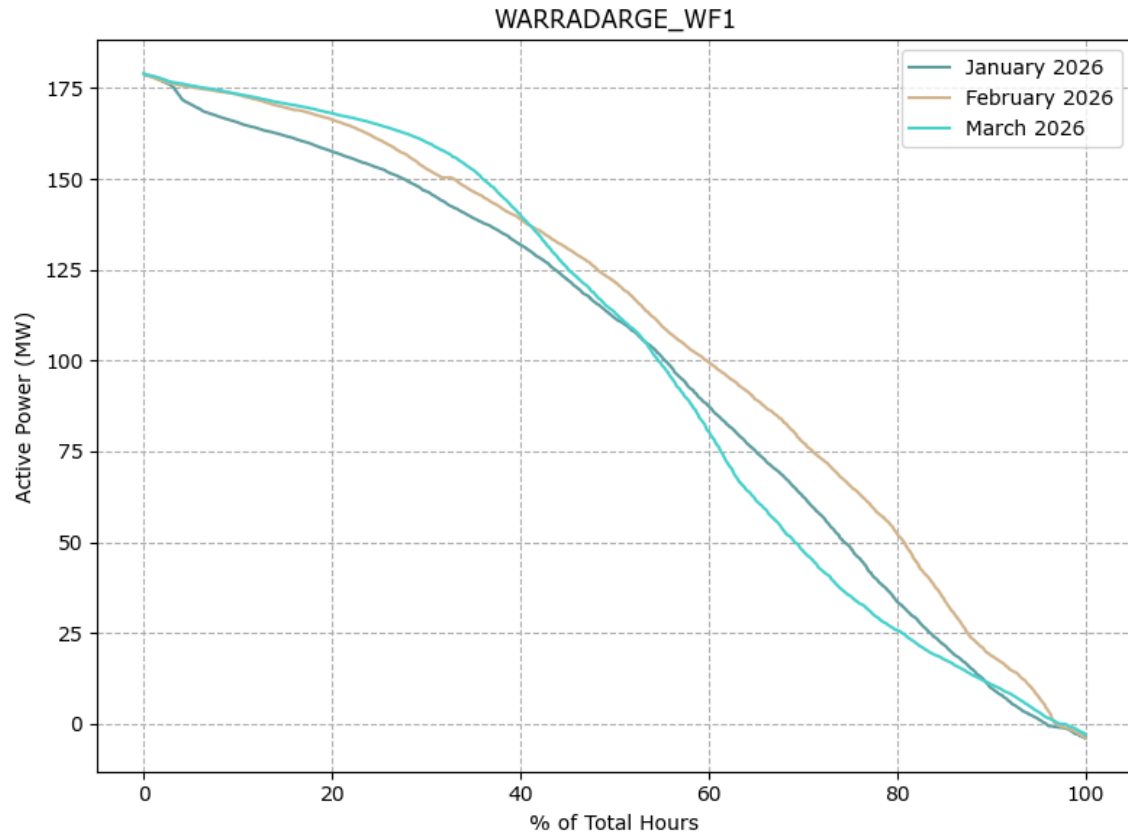


	Jan 2026	Feb 2026	Mar 2026
Energy Generated (GWh)	31.99	27.80	22.57
Total Spot Revenue (\$m)	2.74	2.31	2.16
\$/MWh	\$85.58	\$82.92	\$95.69

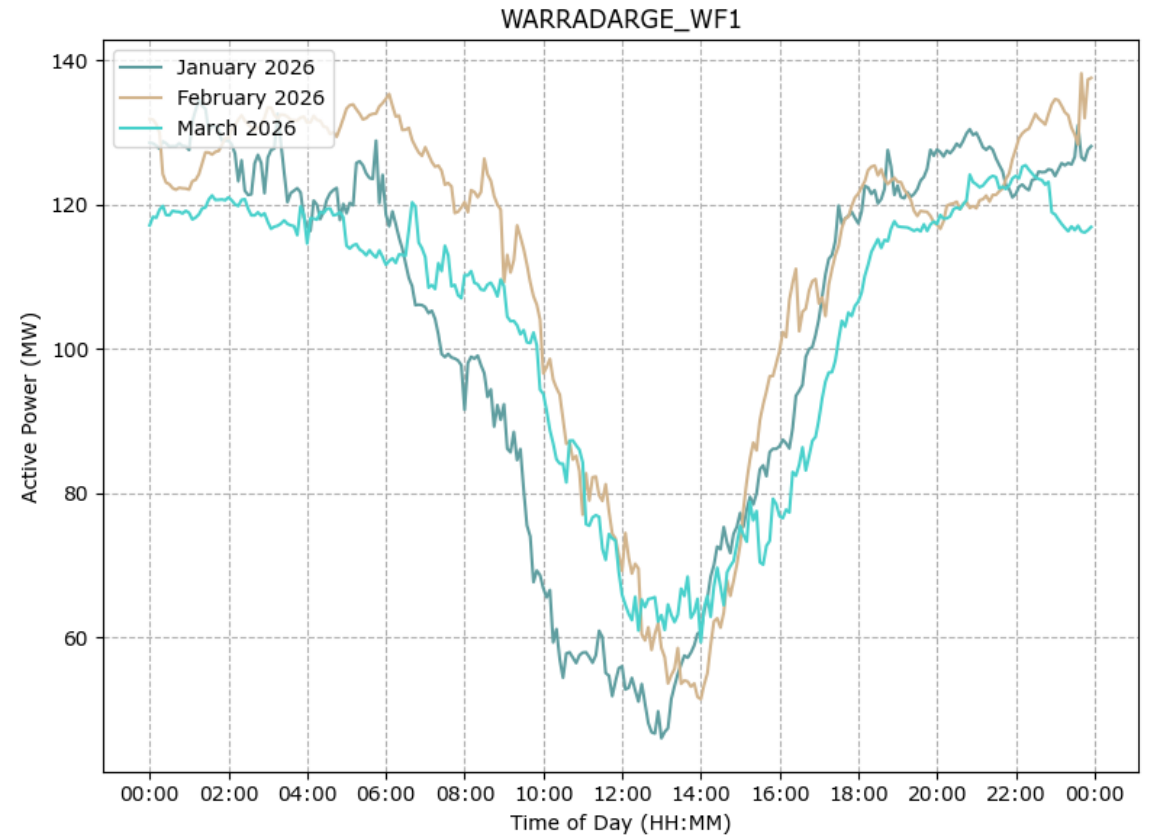
Warradarge Wind Farm

Wind Semi-Scheduled Facility, 180 MW, Bright Energy Investments

Generation Duration Curves



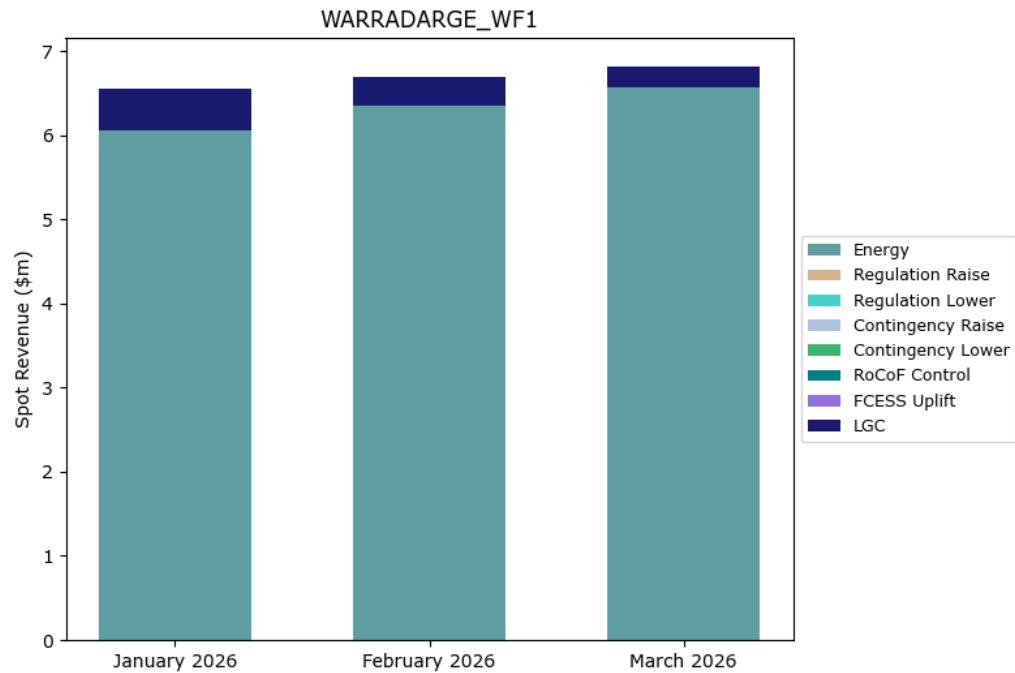
Average Time-of-Day Output



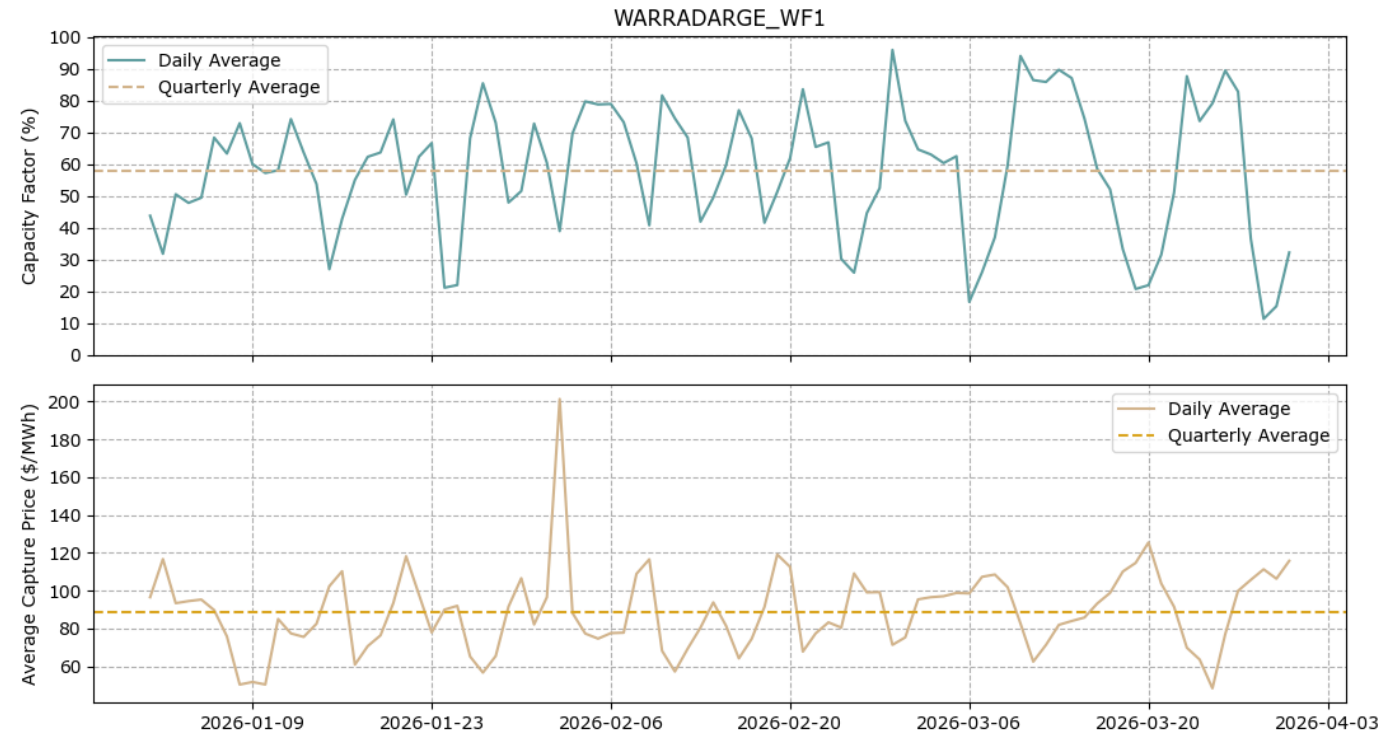
Warradarge Wind Farm

Wind Semi-Scheduled Facility, 180 MW, Bright Energy Investments

Facility Merchant Spot Revenue



Daily Capacity Factor and Average Energy Capture Price

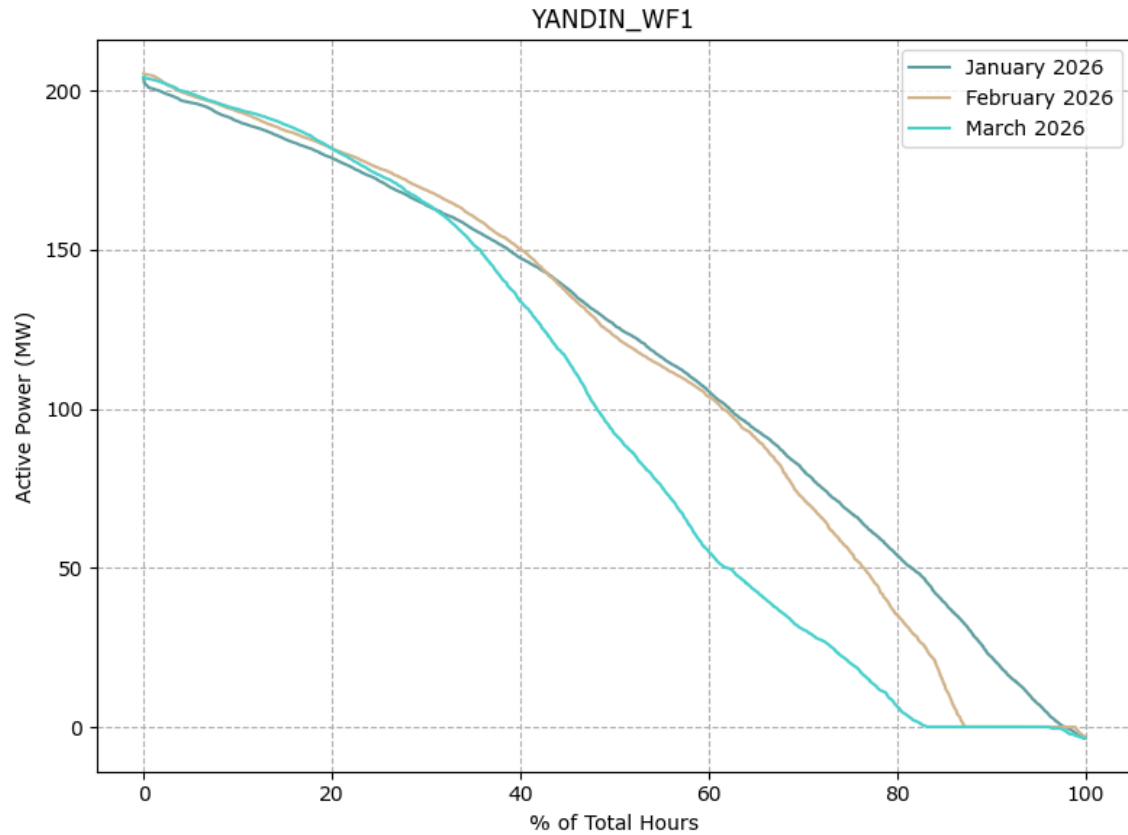


	Jan 2026	Feb 2026	Mar 2026
Energy Generated (GWh)	75.12	74.26	75.86
Total Spot Revenue (\$m)	6.55	6.69	6.82
\$/MWh	\$87.21	\$90.06	\$89.87

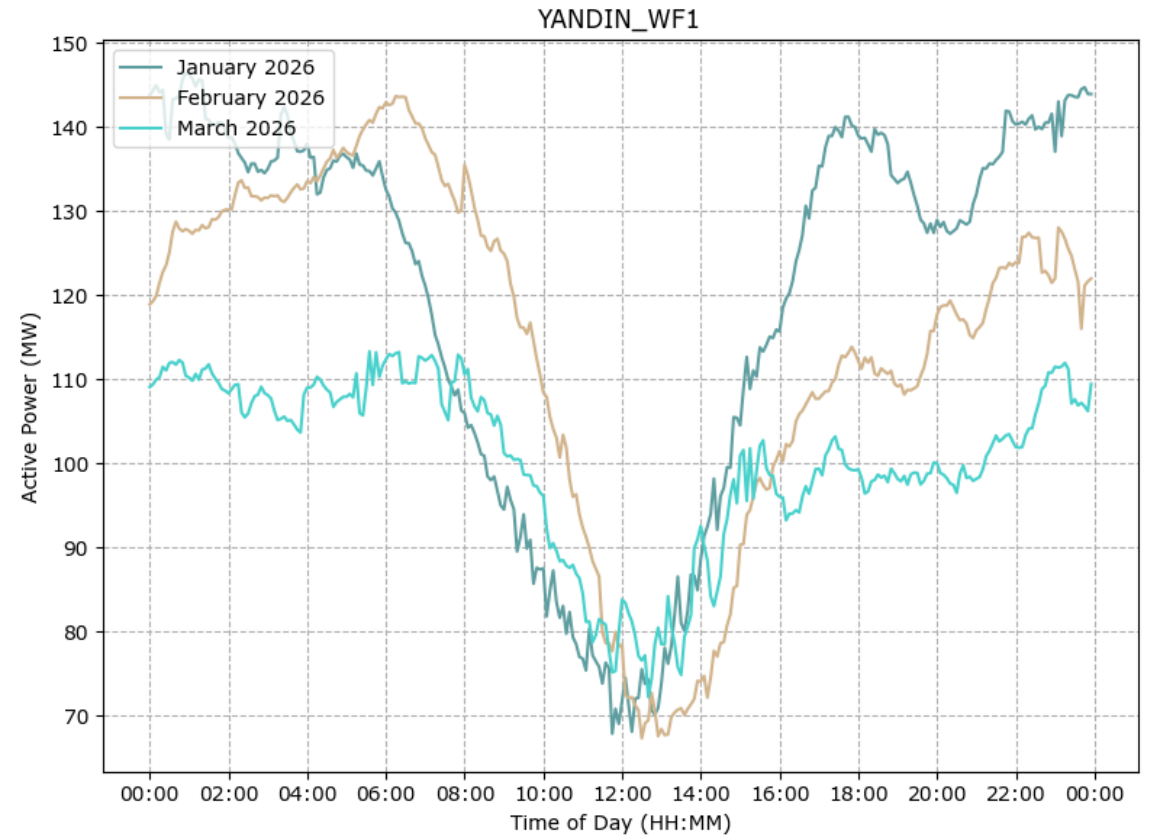
Yandin Wind Farm

Wind Semi-Scheduled Facility, 214.2 MW, Alinta Energy

Generation Duration Curves



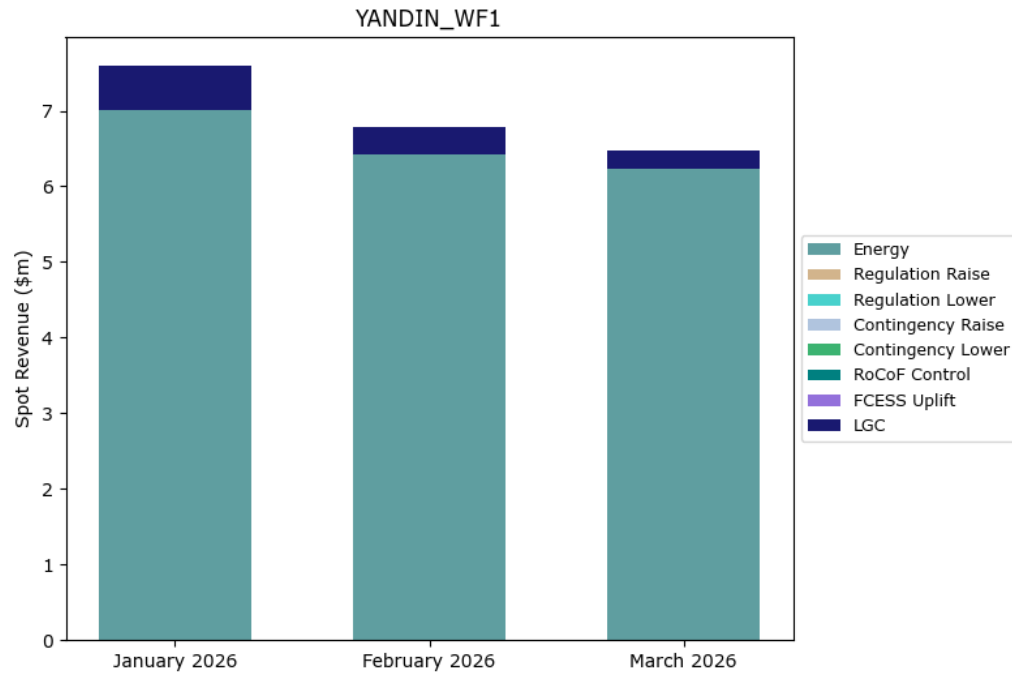
Average Time-of-Day Output



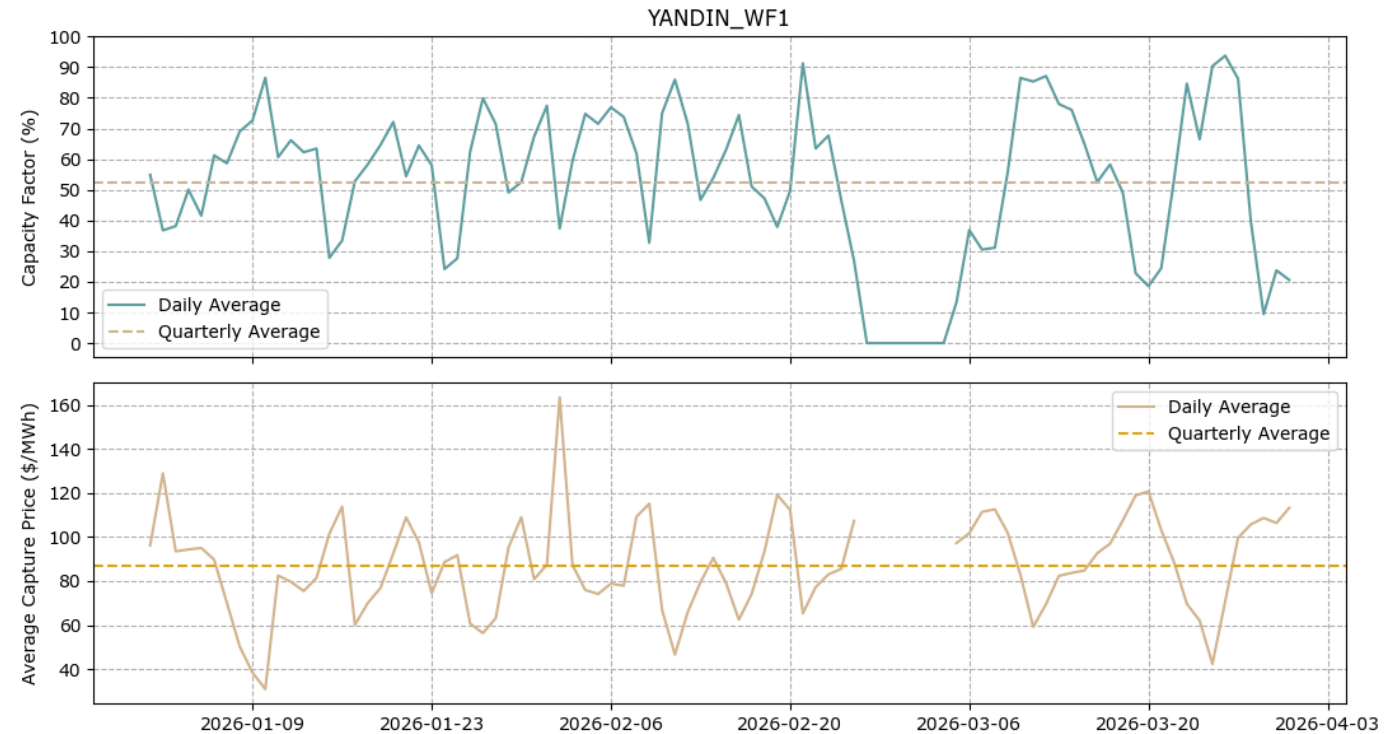
Yandin Wind Farm

Wind Semi-Scheduled Facility, 214.2 MW, Alinta Energy

Facility Merchant Spot Revenue



Daily Capacity Factor and Average Energy Capture Price



	Jan 2026	Feb 2026	Mar 2026
Energy Generated (GWh)	89.58	78.04	73.99
Total Spot Revenue (\$m)	7.60	6.78	6.48
\$/MWh	\$84.80	\$86.91	\$87.55



Ampere Labs

For more WEM resources, please visit:
<https://amperelabs.com.au/wem/>

Or reach out for more information:
wem@amperelabs.com.au

Disclaimer and Copyright

This document is provided “as is” for your information only and no representation or warranty, express or implied, is given by Ampere Labs Pty Ltd (“Ampere Labs”), its directors, employees, agents or affiliates (together its “Associates”) as to its accuracy, reliability or completeness. Ampere Labs and its Associates assume no responsibility, and accept no liability for, any loss arising out of your use of this document. This document is not to be relied upon for any purpose or used in substitution for your own independent analyses and sound judgment. The information contained in this document reflects Ampere Labs’ views, assumptions and expectations as at the date of this document and may be subject to change.

This document and its content is the copyright material of Ampere Labs, unless otherwise stated. No part of this document may be copied, reproduced, distributed or in any way used for commercial purposes without the prior written consent of Ampere Labs.